


**MEMORANDUM**

**March 14, 2013**

**TO:** The Honorable Chair and Members of The School Board of Miami-Dade County, Florida

**FROM:** Alberto M. Carvalho, Superintendent of Schools 

**SUBJECT: TRANSMITTAL OF EVALUATION MATTERS - CHARTER AND TRADITIONAL SCHOOLS: AN ANALYSIS OF ENTRY AND MOVEMENT**

This report examines the movement of students between charter and traditional schools from October 2011 to October 2012 and explores the influence of demographic factors on the extent to which traditional schools and charter schools are exchanging students. The results of the report indicate that students who transfer from traditional schools to charter schools mostly do so upon promotion to sixth grade, while students who transfer from charter schools to traditional schools mostly do so upon promotion to ninth grade. Overall, the percentage of students at the charter schools who transfer to the traditional schools is much greater than the percentage of students from the traditional schools who transfer to the charter schools.

Over one in eight students in the District currently attends a charter school, a proportion that has steadily increased in recent years. The exchange of students between the traditional and charter schools, when added to the new entries that go directly to charter schools, has increased the percentage of disadvantaged students, decreased the academic achievement, and decreased enrollment in the District's traditional schools. The loss has tended to cluster in specific neighborhoods and is more pronounced in middle schools.

If you have any questions regarding this evaluation or require additional information, please contact Ms. Milagros R. Fornell, Chief Academic Officer, Office of Academics and Transformation, at 305 995-1451, or Ms. Gisela Feild, Administrative Director, Assessment, Research, and Data Analysis, at 305 995-2943.

AMC:ig  
M753

Attachment

cc: School Board Attorney  
Superintendent's Senior Staff  
Ms. Gisela Feild  
Dr. Sally A. Shay  
Dr. Steven M. Urdegar



# Evaluation Matters

---

Volume 2, Number 7

February 2013

Steven M. Urdegar, Ph.D., Director

## **Charter and Traditional Schools: *An Analysis of Student Entry and Movement, 2011-12 to 2012-13***

### **1. What is the purpose of this report?**

Changes to the student population at the charter and the traditional schools in the M-DCPS result from the entry of students new to the district and/or student movement into and between schools. As of October 2012, 13.4% of all M-DCPS students attended a charter school. The principal purpose of this report is to examine the entries and transfers into and between charter and traditional schools from October 2011 to October 2012.

### **2. Which populations were targeted in this report?**

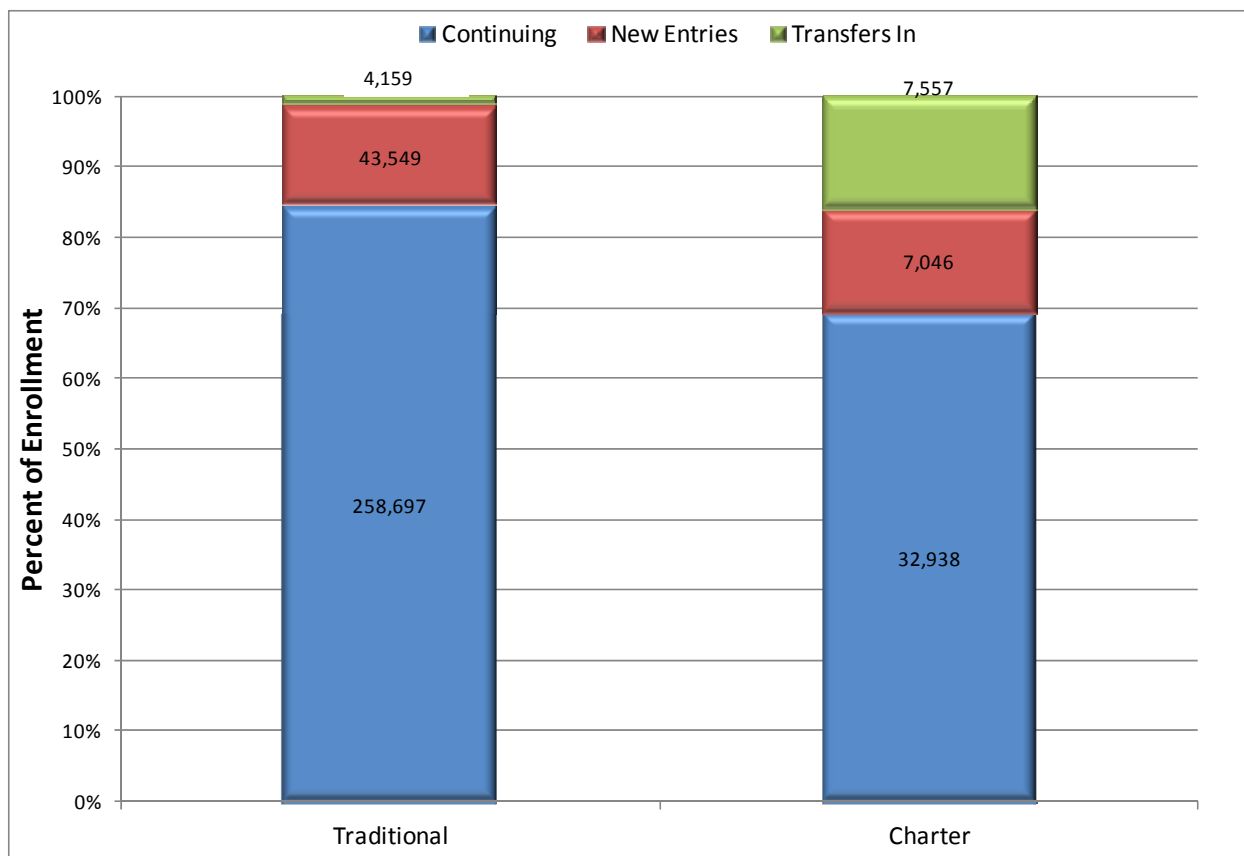
The sample for the study consisted of two groups: (a) students in the M-DCPS who attended the traditional or the charter schools during both 2011-12 and 2012-13 and (b) students new to the M-DCPS in 2012-13. Only students classified as “Active” and “Other” who were enrolled during October of a given school year were included in this study.

### **3. How were the data for this report collected and analyzed?**

Data were obtained from the student database files and student assessment records. Patterns of student transitions into the charter schools between October 2011 and October 2012 were examined by selected demographic and achievement categories and presented via descriptive statistics. An estimate of the number of students at each traditional school who currently attend charter schools was obtained based on the assumption that charter school students would have attended their residence schools, based on established school attendance boundaries, had they not opted to enroll in a charter school.

### **4. What are the sources of enrollment at the charter and traditional schools?**

Enrollment patterns were defined in the following way: (a) continuing students that remain within the same governance structure (i.e. charter or traditional) from one year (October 2011) to the next (October 2012), (b) transfer students moved from one governance structure to the other, and (c) new entries (October 2012). The transfers into one governance structure are equivalent to the transfers out of the other governance structure. Figure 1 depicts the enrollment at the charter and the traditional schools comprising each group of students.



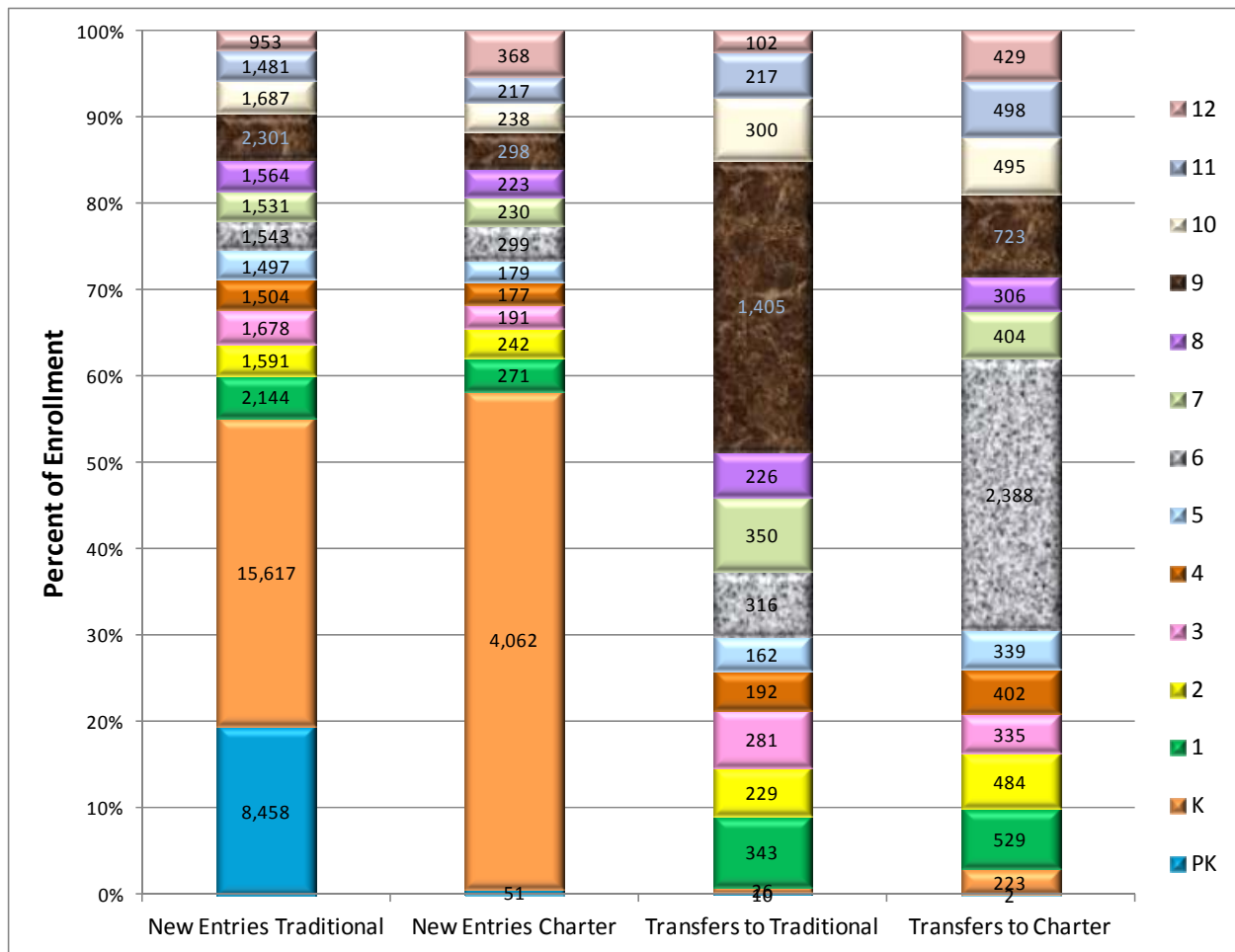
**Figure 1. Enrollment Sources**

Based on changes to the student population from October 2011 to October 2012, the sources of enrollment in the Traditional and Charter schools were classified into three categories: Continuing, New Entries, and Transfers in.

- Approximately the same proportion of students were new entries into traditional and charter schools (14.2% and 14.8%, respectively).
- About 85% of the traditional charter school students remained enrolled in a traditional school from 2011-12 to 2012-13, as compared to about 69% of the charter school students.
- Transfers between governance structures accounted for a large portion of the difference.
  - 4,159 students transferred into traditional schools from charter schools, representing about 10.4% of charter school enrollment.
  - 7,557 students transferred into charter schools from traditional schools, representing about 2.5% of traditional school enrollment.

## 5. How do the movement categories break down by grade level?

Although the number of students enrolled in charter and traditional schools is roughly equally distributed between Grades 1 and 11, the entries and transfers tend to cluster at specific grades with different patterns in the charter and the traditional schools. Figure 2 pictures each of the two sources of movement in the charter and the traditional schools, disaggregated by grade level.



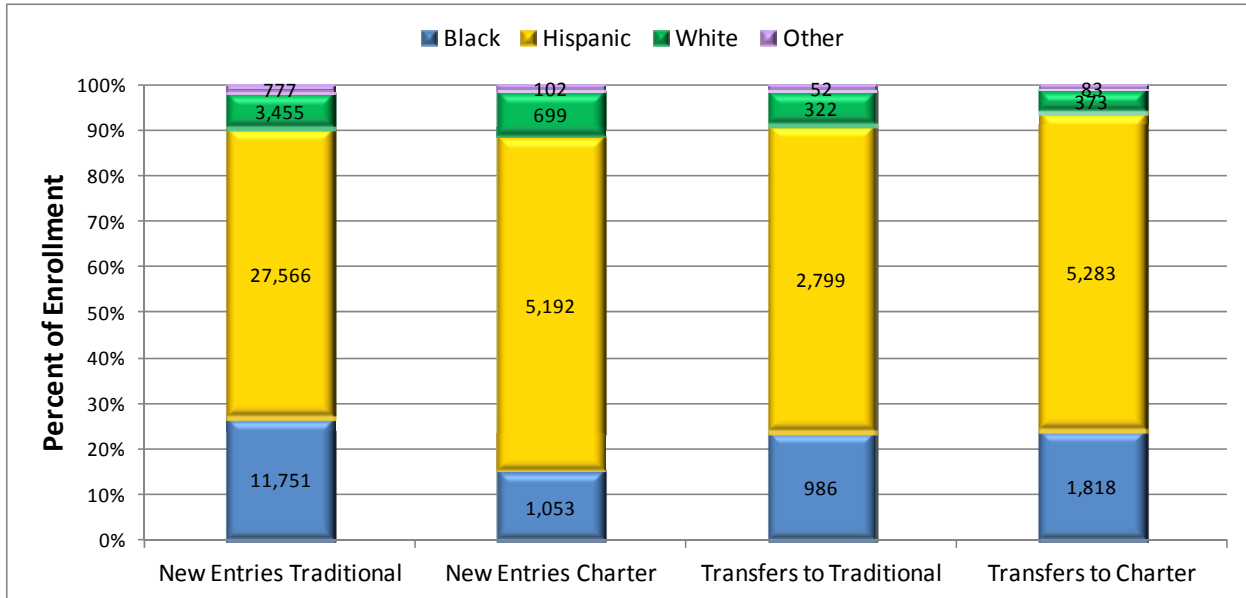
**Figure 2. Movement type by grade level**

- Entries
  - ◆ Students in prekindergarten and kindergarten represent over half of the entries into the both the traditional schools (55.8%, n=24,075) and the charter schools (58.3%, n=4,113).
  - ◆ Virtually all prekindergarten students in the District enter traditional schools.
- Transfers
  - ◆ More sixth graders (n=2,388) transferred to the charter schools than at any other grade, representing 30.9% of the traditional to charter school transfers.
  - ◆ More ninth graders (n=1,405) transferred to the traditional schools to the charters schools that at any other grade, representing 33.8% of the charter to traditional school transfers.

## 6. How do the movement categories break down by demographic subgroup?

Figure 3 - 6 picture each of the two sources of movement at the charter and the traditional schools disaggregated by selected demographic subgroups.

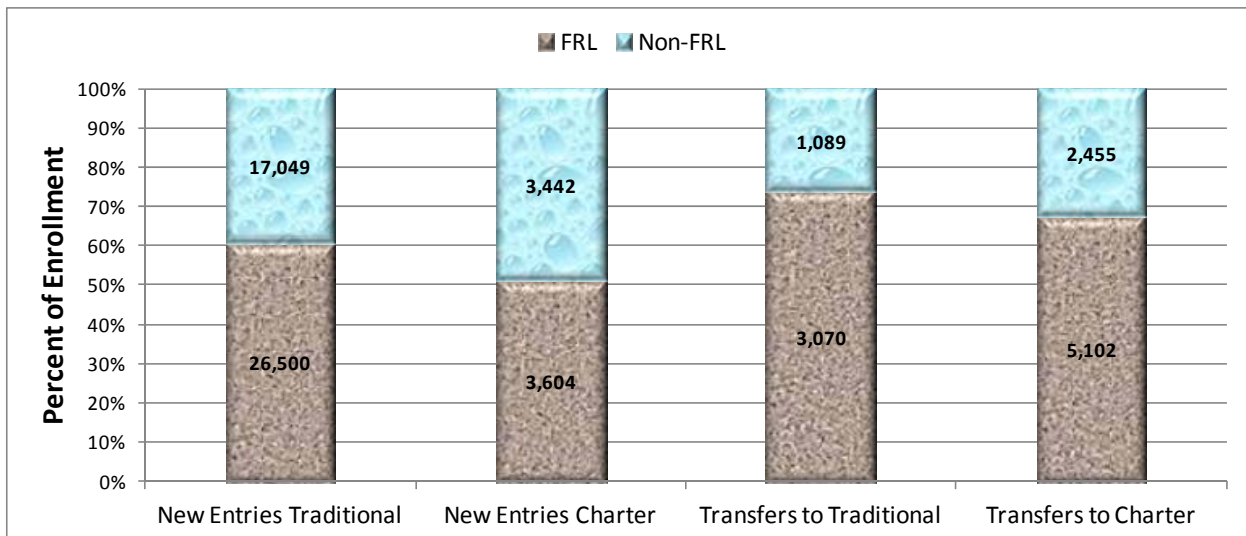
- **Race/Ethnic classification** (Figure 3).



**Figure 4. Movement type by Race/Ethnic classification**

- Hispanic students are over-represented in new entries, 73.7%, and transfers, 69.9%, to the charter schools, compared to the traditional schools, 63.2% and 67.3%, respectively.
- Black students are under-represented in new entries, 14.6%, and transfers, 24.1%, compared to the traditional schools, 26.5% and 23.7%, respectively.

- **Free/Reduced Lunch classification** (Figure 4).

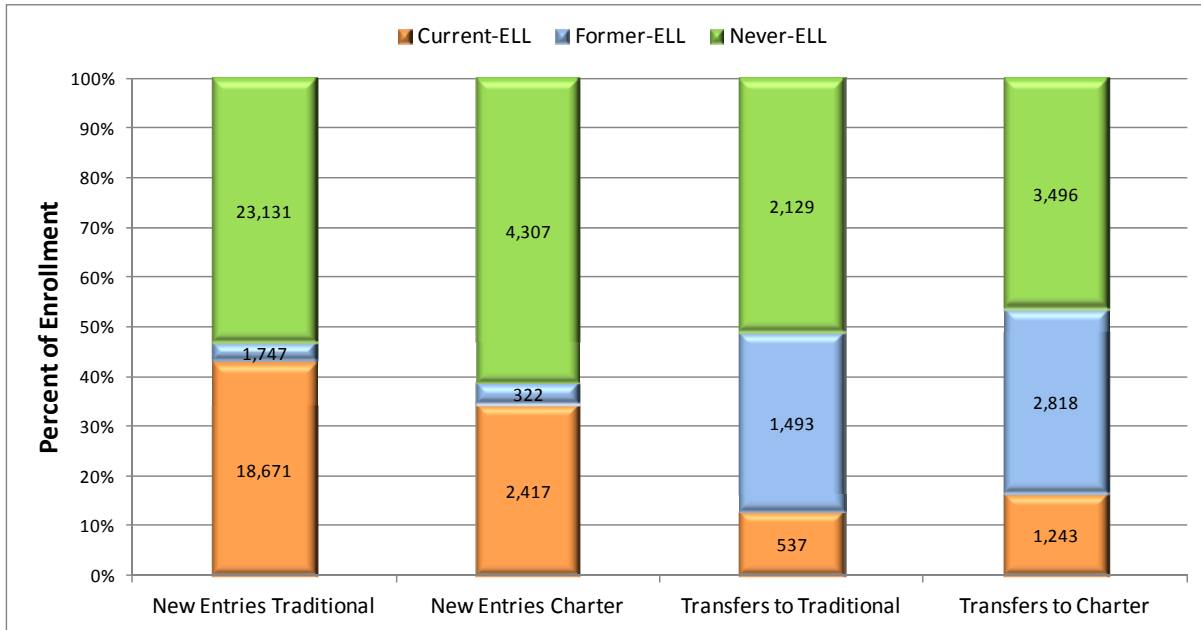


**Figure 5. Movement type by Free/Reduced price lunch classification**

- Students who eligible/applied for Free/Reduced Price Lunch (FRL) are significantly over-represented in new entries into the traditional schools at 60.9% compared to the charter schools at 51.1%.

- Students eligible/applied for FRL are slightly over-represented in transfers to the traditional schools at 73.8% compared to the charter schools at 67.5%.

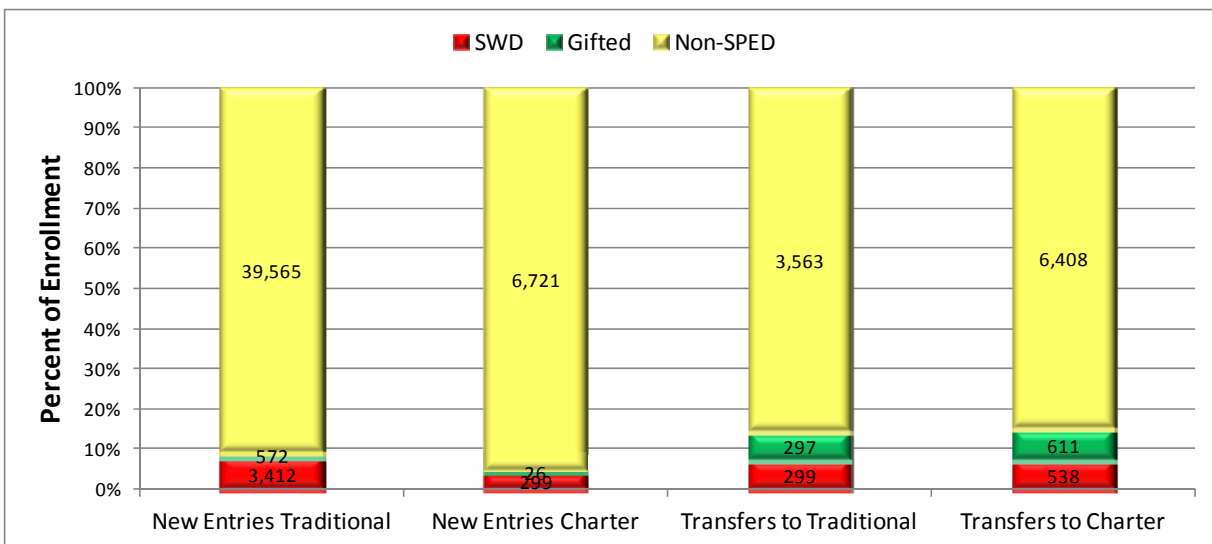
- **English Language Learner classification (Figure 6).**



**Figure 6. Movement type by English Language Learner (ELL) classification**

- Students classified as Current English Language Learners (Current-ELL) are slightly over-represented in new entries to the traditional schools at 42.8% compared to the charter schools at 34.3%.
- Students classified as Current-ELL are slightly over-represented in transfers to the traditional schools at 51.2% compared to the charter schools at 46.3%.

- **Special Education status (Figure 7).**



**Figure 7. Movement type by Special Education (SPED) status**

- Students with disabilities are over-represented in new entries into the traditional schools at 7.8% compared to the charter schools at 4.2%.
- Similar percentages of gifted students transfer to the traditional and charter schools.

## 6. How do the movement categories break down by 2012 FCAT 2.0/Algebra I EOC Achievement level?

- Reading (Figure 8).

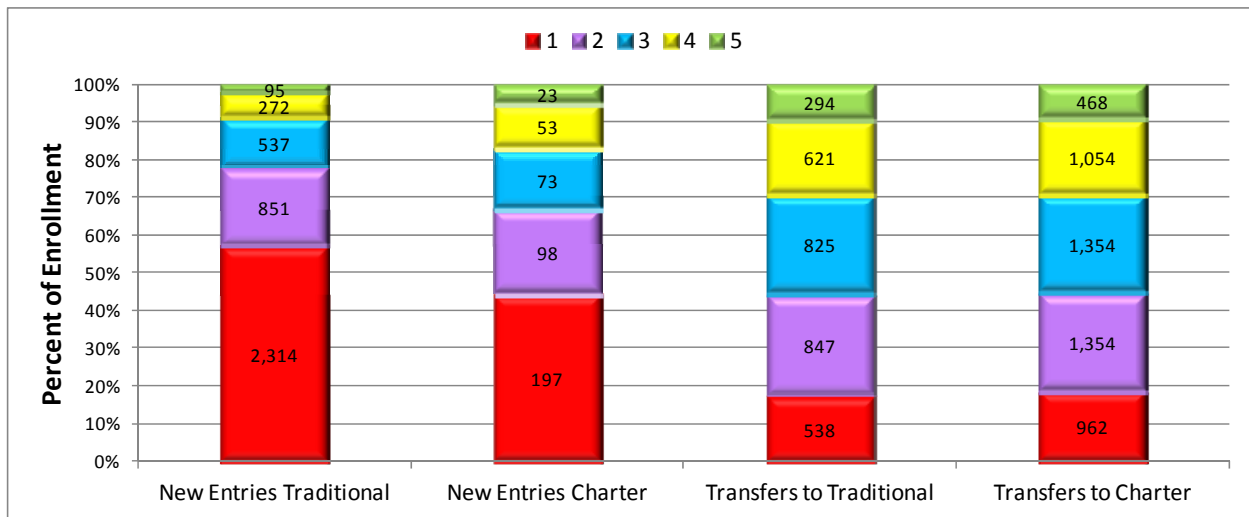


Figure 8. Movement type by 2012 FCAT 2.0 reading achievement level; only students in Grades 3-10 are included.

- ◆ Students who score at levels 3-5 are over-represented in new entries to the charter schools, 33.6%, compared to the traditional schools, 22.2%.
- ◆ Similar percentages of students who score at levels 4-5 transfer to the charter and the traditional schools.

- Mathematics (Figure 9).

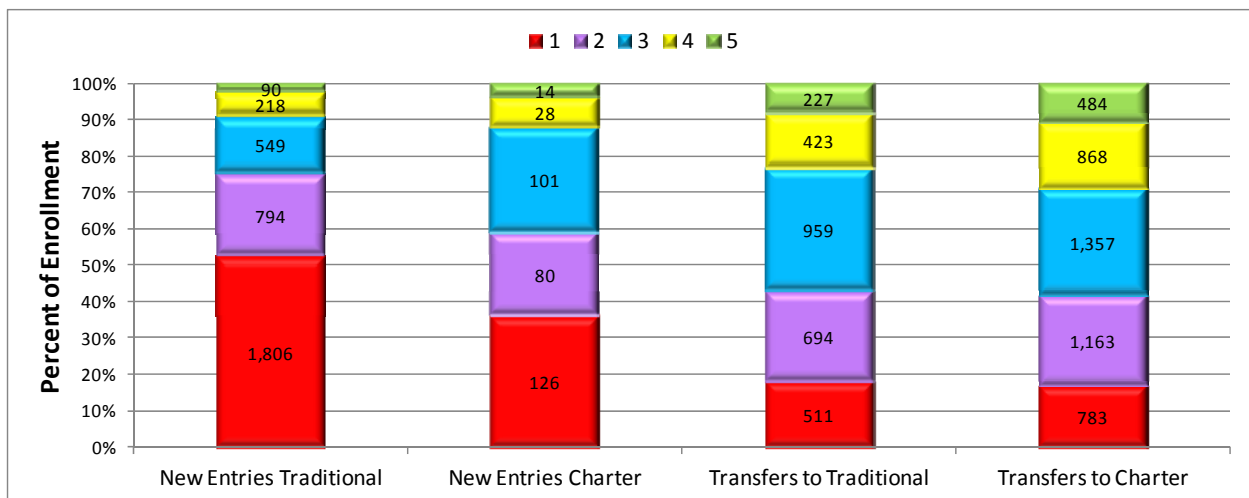


Figure 9. Movement type by 2012 FCAT 2.0 Mathematics/Algebra I EOC achievement level; only tested students are included.

- ◆ Students who score at levels 3-5 are slightly over-represented in new entries to the charter schools, 40.9%, compared to the traditional schools, 36.3%.

## **7. How does enrollment at the traditional and charter schools differ by neighborhood?**

Figure 10 disaggregates the October 2012 student enrollment according to zip codes with greater than 50 students. Countywide numbers are provided by the topmost bar. The numbers presented differ slightly from those presented earlier because zip code information is not available for all students. Figure 11 is a map, which provides the geographic boundaries of these zip codes and depicts their location within Miami-Dade County. The figure shows that the proportion of students who attend charter schools tends to cluster in neighborhoods.

- The percentage of students who attend charter schools in Florida City (33035) and portions of Overtown (33128, 33132) is nearly four times the district average of 13.4%.
- The percentage of students who attend charter schools in portions of Homestead (33033-33034), Aventura (33180), and western Miami-Dade (33194) is around twice the district average.



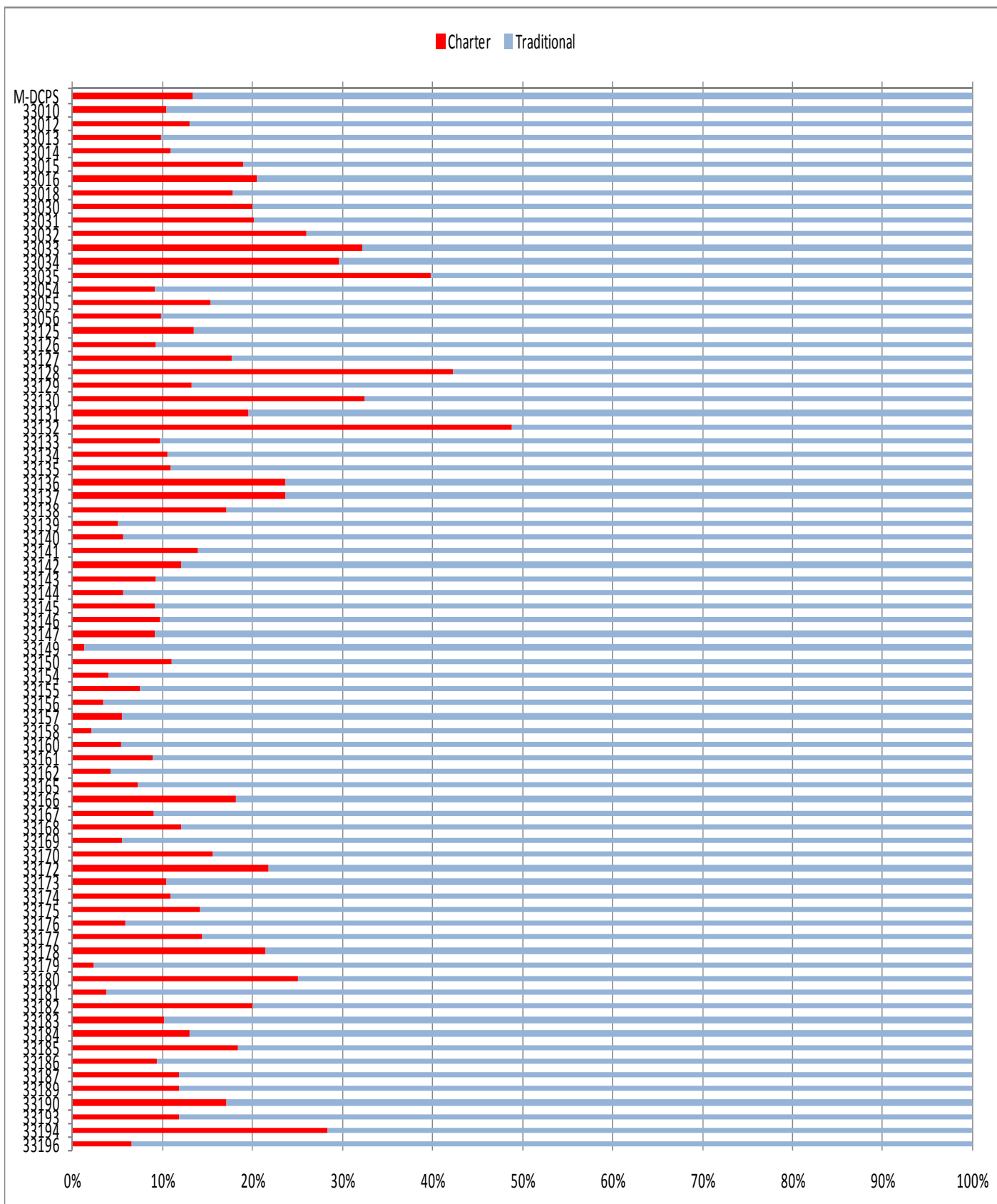


Figure 10. Enrollment at the Charter and Traditional Schools by Zip Code

# MIAMI-DADE COUNTY, FLORIDA ZIP CODE BOUNDARY

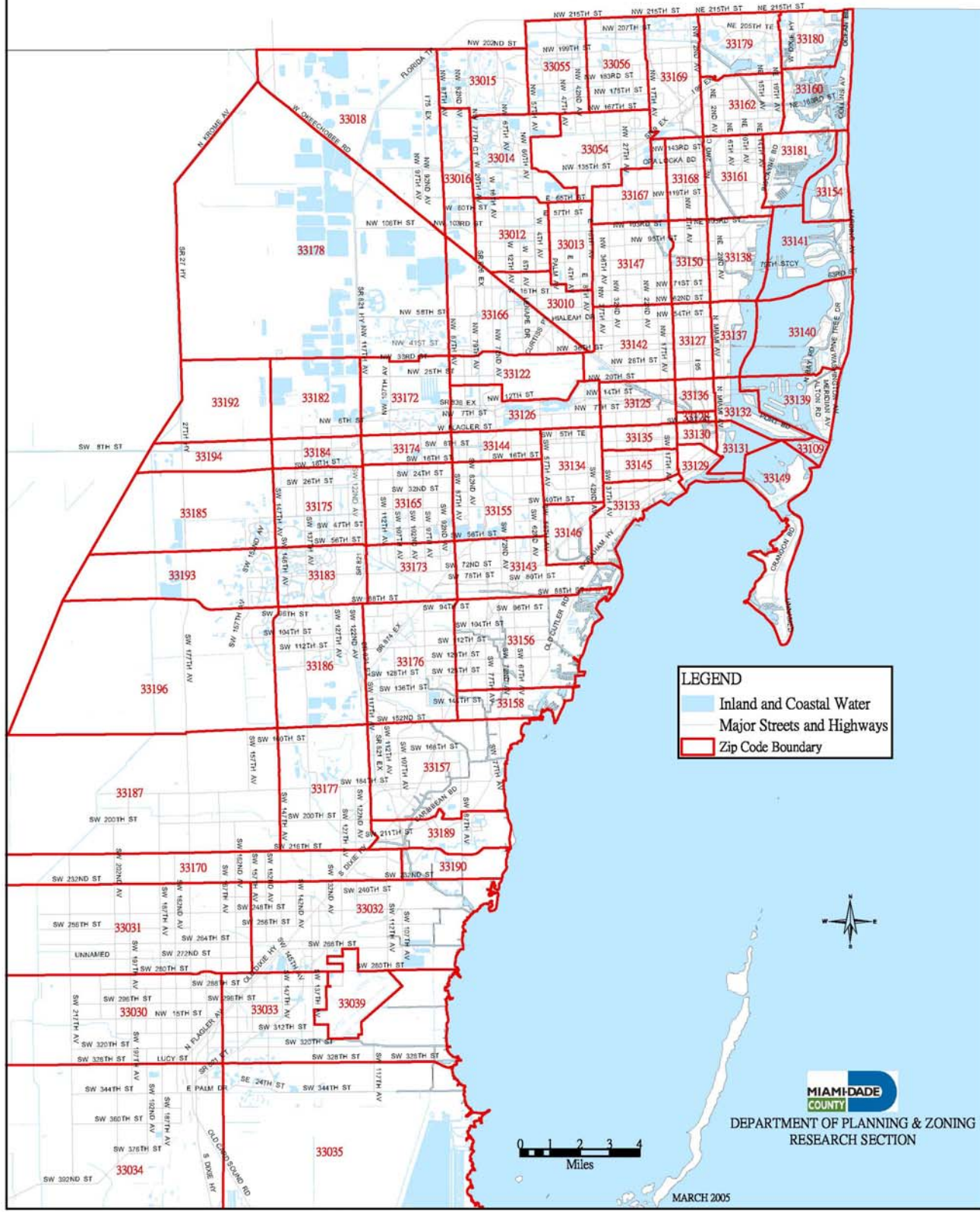


Figure 11 Map of Miami-Dade County subdivided into zip codes

## 8. What percentage of enrollment do traditional schools lose to charter schools?

The number of the students lost to the charter schools was estimated using the residence schools of students who are attending charter schools, and assuming that those students would have otherwise attended their residence schools, based on established school attendance boundaries, had they not opted to enroll in a charter school. Table 1 lists the number of percent of students attending each traditional school, any charter school, and the total of the two, for the 2011-12 and 2012-13 school years. School wide magnet schools and schools without a resident population are excluded. Schools with the highest enrollment loss to charter schools (25th percentile) relative to the total within their attendance boundary are highlighted in yellow.

- From 2011 to 2012, traditional middle schools lost the highest percentage of students (16.7%) to the charter schools, followed by K-8 centers (11.6%), senior high schools (10.9%), and elementary schools (10.2%).
- Traditional schools at each grade organizations (i.e., elementary, K-8, middle, and senior) lost a greater percentage of their enrollment to the charter schools during 2012-13 than during 2011-12, with elementary schools seeing the greatest increase (25.9%), followed by senior high schools (25.3%), K-8 centers (10.5%), and middle schools (3.1%).
- Knowledge of the schools' demographic characteristics allows one to predict between 15% (elementary) and 46% (senior) of the percentage of enrollment lost to charter schools.
  - ◆ Elementary: As the percentage of students who are classified as gifted, black, and/or as English language learners increases, the percentage enrollment loss decreases.
  - ◆ K-8/senior: As the percentage of students who are classified as gifted increases, the percentage enrollment loss decreases.
  - ◆ Middle: As the percentage of students who are proficient in mathematics increases, the percentage of enrollment loss decreases.

## 9. What are the primary conclusions of this report?

More than one in eight students in the district currently attends a charter school, a proportion that has steadily increased in recent years. The exchange of students between the traditional and charter schools, when added to the new entries that go directly to charter schools, has increased the percentage of disadvantaged students, decreased the academic achievement, and decreased enrollment at the district's traditional schools. The loss has tended to cluster in specific neighborhoods and is more pronounced in middle schools.

**Table 1. Actual Enrollment at Traditional Schools and Projected Enrollment Lost to Charter Schools, 2011-11 to 2012-13**

Region	Location	School	2011-12					2012-13				
			Home		Charter		Total <sup>a</sup>	Home		Charter		Total <sup>a</sup>
			N	%	n	%		n	%	N	%	
<b>ELEMENTARY</b>												
6	0081	LENORA BRAYNON SMITH	469	100.0	0	0.0	469	439	90.1	48	9.9	487
4	0101	ARCOLA LAKE EL	491	94.6	28	5.4	519	522	94.9	28	5.1	550
4	0111	MAYA ANGELOU EL	548	100.0	0	0.0	548	684	100.0	0	0.0	684
4	0121	AUBURNDALE EL	904	97.8	20	2.2	924	853	96.4	32	3.6	885
5	0125	NORMA BUTLER BOSSARD E	1,319	92.0	114	8.0	1,433	1,258	91.1	123	8.9	1,381
5	0161	AVOCADO EL	624	82.9	129	17.1	753	585	82.0	128	18.0	713
4	0201	BANYAN EL	378	93.8	25	6.2	403	363	94.3	22	5.7	385
5	0211	DR MANUEL C BARREIRO	871	78.1	244	21.9	1,115	834	75.3	273	24.7	1,107
5	0251	ETHEL KOGER BECKHAM	705	91.0	70	9.0	775	721	91.6	66	8.4	787
6	0261	BEL-AIRE EL	510	91.9	45	8.1	555	470	91.6	43	8.4	513
5	0271	BENT TREE EL	525	86.1	85	13.9	610	585	86.4	92	13.6	677
5	0311	GOULDS ELEMENTARY SCH	577	74.0	203	26.0	780	609	75.1	202	24.9	811
1	0321	BISCAYNE EL	750	87.0	112	13.0	862	713	86.8	108	13.2	821
1	0341	ARCH CREEK ELEMENTARY	575	98.0	12	2.0	587	577	97.3	16	2.7	593
6	0361	BISCAYNE GARDENS EL	665	95.1	34	4.9	699	672	95.0	35	5.0	707
4	0401	VAN E BLANTON EL	575	95.5	27	4.5	602	566	95.3	28	4.7	594
5	0441	BLUE LAKES EL	539	91.4	51	8.6	590	488	90.2	53	9.8	541
1	0461	BRENTWOOD EL	826	89.5	97	10.5	923	798	88.8	101	11.2	899
1	0481	JAMES H BRIGHT EL	816	95.3	40	4.7	856	769	94.9	41	5.1	810
4	0521	BROADMOOR EL	441	100.0	0	0.0	441	465	92.4	38	7.6	503
1	0561	WILLIAM J BRYAN EL	764	97.6	19	2.4	783	747	96.9	24	3.1	771
1	0641	BUNCHE PARK EL	291	94.5	17	5.5	308	318	96.7	11	3.3	329
6	0661	CARIBBEAN EL	631	77.9	179	22.1	810	638	77.1	190	22.9	828
5	0671	CALUSA EL	834	91.1	81	8.9	915	909	92.8	70	7.2	979
6	0681	CAROL CITY EL	681	86.0	111	14.0	792	654	89.1	80	10.9	734
4	0721	GEORGE W CARVER EL	515	82.1	112	17.9	627	456	79.7	116	20.3	572
5	0771	WILLIAM A CHAPMAN	377	79.9	95	20.1	472	515	84.2	97	15.8	612
4	0801	CITRUS GROVE EL	883	89.6	102	10.4	985	895	89.9	100	10.1	995
5	0831	CLAUDE PEPPER EL	813	88.8	103	11.2	916	754	84.8	135	15.2	889
4	0841	COCONUT GROVE EL	362	94.5	21	5.5	383	387	91.3	37	8.7	424
6	0861	COLONIAL DRIVE EL	258	90.2	28	9.8	286	279	88.9	35	11.1	314
4	0881	COMSTOCK EL	564	76.2	176	23.8	740	564	73.8	200	26.2	764
4	1001	CORAL PARK EL	1,115	96.0	46	4.0	1,161	1,125	95.5	53	4.5	1,178

Note. Schools highlighted in yellow had the greatest enrollment loss (top 25th percentile) in their grade organization during 2012.

(table continues)

**Table 1, continued**

Region	Location	School	2011-12					2012-13				
			Traditional		Charter		Total <sup>a</sup>	Traditional		Charter		Total <sup>a</sup>
			n	%	n	%		n	%	N	%	
5	1041	CORAL REEF EL	823	96.7	28	3.3	851	837	97.2	24	2.8	861
4	1081	CORAL TERRACE EL	523	96.5	19	3.5	542	503	94.5	29	5.5	532
1	1161	CRESTVIEW EL	596	97.5	15	2.5	611	519	97.4	14	2.6	533
5	1241	CUTLER RIDGE EL	846	96.2	33	3.8	879	811	95.0	43	5.0	854
5	1281	CYPRESS EL	356	91.5	33	8.5	389	343	90.3	37	9.7	380
6	1361	FREDERICK DOUGLASS EL	340	100.0	0	0.0	340	359	100.0	0	0.0	359
5	1371	MARJORY S DOUGLAS EL	1,113	88.4	146	11.6	1,259	1,049	86.5	164	13.5	1,213
1	1481	JOHN G DUPUIS EL	689	92.4	57	7.6	746	715	91.8	64	8.2	779
1	1521	AMELIA EARHART EL	514	96.1	21	3.9	535	473	95.6	22	4.4	495
6	1561	EARLINGTON HEIGHTS EL	505	100.0	0	0.0	505	481	100.0	0	0.0	481
4	1641	EMERSON EL	402	92.2	34	7.8	436	406	90.0	45	10.0	451
5	1691	CHRISTINA M EVE EL	672	90.8	68	9.2	740	637	90.6	66	9.4	703
4	1761	DAVID FAIRCHILD EL	634	95.1	33	4.9	667	632	96.8	21	3.2	653
4	1801	FAIRLAWN EL	684	96.7	23	3.3	707	681	95.8	30	4.2	711
5	1811	DANTE B FASCELL EL	516	92.6	41	7.4	557	549	91.0	54	9.0	603
4	1841	FLAGAMI EL	463	97.3	13	2.7	476	470	96.3	18	3.7	488
4	1881	H M FLAGLER EL	931	96.6	33	3.4	964	838	96.7	29	3.3	867
1	1921	FLAMINGO EL	786	98.3	14	1.8	800	768	98.1	15	1.9	783
6	2001	FLORIDA CITY EL	747	66.8	372	33.2	1,119	768	71.4	308	28.6	1,076
5	2021	GLORIA FLOYD EL	640	81.6	144	18.4	784	607	78.3	168	21.7	775
1	2081	FULFORD EL	519	98.5	8	1.5	527	524	97.2	15	2.8	539
1	2111	HIALEAH GARDENS	933	85.6	157	14.4	1,090	907	84.7	164	15.3	1,071
5	2151	JACK D GORDON EL	1,131	93.3	81	6.7	1,212	1,113	92.5	90	7.5	1,203
6	2161	GOLDEN GLADES EL	285	93.8	19	6.3	304	267	93.0	20	7.0	287
1	2181	JOELLA GOOD ELEMENTARY	970	91.4	91	8.6	1,061	927	91.0	92	9.0	1,019
1	2191	SPANISH LAKE ELEMENTARY	1,696	86.2	272	13.8	1,968	1,646	85.3	283	14.7	1,929
6	2241	GRATIGNY ELEM	715	94.5	42	5.5	757	698	94.2	43	5.8	741
5	2261	GREENGLADE ELEM	492	65.2	263	34.8	755	488	62.4	294	37.6	782
1	2281	GREYNOLDS PARK EL	813	99.3	6	0.7	819	795	99.4	5	0.6	800
5	2321	GULFSTREAM EL	672	95.0	35	5.0	707	663	94.8	36	5.2	699
4	2331	CHARLES R HADLEY EL	1,015	92.2	86	7.8	1,101	1,029	91.6	94	8.4	1,123
5	2341	JOE HALL ELEMENTARY	593	77.2	175	22.8	768	594	75.1	197	24.9	791

Note. Schools highlighted in yellow had the greatest enrollment loss in their grade organization (top 25<sup>th</sup> percentile) during 2012.

(table continues)

**Table 1, continued**

Region	Location	School	2011-12					2012-13				
			Traditional		Charter		Total <sup>a</sup>	Traditional		Charter		Total <sup>a</sup>
			n	%	n	%		n	%	N	%	
4	2351	ENEIDA MASSAS HARTNER	578	83.0	118	17.0	696	562	82.3	121	17.7	683
4	2361	HIALEAH EL	756	93.1	56	6.9	812	665	91.7	60	8.3	725
1	2371	WEST HIALEAH GARDENS E	1,153	86.3	183	13.7	1,336	1,182	86.4	186	13.6	1,368
1	2401	HIBISCUS EL	595	98.8	7	1.2	602	550	98.7	7	1.3	557
1	2441	V BOONE/HIGHLAND OAKS	738	98.9	8	1.1	746	741	98.7	10	1.3	751
6	2501	HOLMES ELEMENTARY	476	94.6	27	5.4	503	593	94.6	34	5.4	627
5	2511	ZORA NEALE HURSTON EL	748	68.5	344	31.5	1,092	753	64.6	413	35.4	1,166
5	2521	OLIVER HOOVER EL	852	91.4	80	8.6	932	813	89.6	94	10.4	907
5	2541	HOWARD DRIVE EL	683	98.4	11	1.6	694	660	98.1	13	1.9	673
1	2581	MADIE IVES ELEMENTARY	765	98.8	9	1.2	774	721	98.9	8	1.1	729
5	2641	KENDALE EL	522	91.9	46	8.1	568	490	91.8	44	8.2	534
5	2651	KENDALE LAKES EL	727	86.9	110	13.1	837	725	86.5	113	13.5	838
4	2661	KENSINGTON PARK EL	1,227	97.1	37	2.9	1,264	1,188	95.7	53	4.3	1,241
4	2781	KINLOCH PARK EL	826	98.3	14	1.7	840	814	97.3	23	2.7	837
1	2801	LAKE STEVENS EL	311	81.4	71	18.6	382	288	78.0	81	22.0	369
4	2821	LAKEVIEW EL	459	95.8	20	4.2	479	421	95.2	21	4.8	442
5	2891	WILLIAM H LEHMAN	693	85.5	118	14.5	811	646	81.9	143	18.1	789
6	2941	LAURA C SAUNDERS	731	73.9	258	26.1	989	702	77.8	200	22.2	902
6	2981	LIBERTY CITY EL	423	94.6	24	5.4	447	448	92.4	37	7.6	485
6	3021	JESSE J MCCRARY, JR	554	91.9	49	8.1	603	563	92.6	45	7.4	608
6	3041	LORAH PARK EL	443	91.5	41	8.5	484	430	91.7	39	8.3	469
4	3051	TOUSSAINT L'OUVERTURE	505	91.2	49	8.8	554	477	90.9	48	9.1	525
4	3061	LUDLAM EL	430	89.0	53	11.0	483	392	92.9	30	7.1	422
5	3111	WESLEY MATTHEWS EL	513	91.4	48	8.6	561	515	91.5	48	8.5	563
1	3141	MEADOWLANE EL	1,126	92.4	93	7.6	1,219	1,096	92.3	92	7.7	1,188
4	3181	MELROSE EL	557	85.8	92	14.2	649	779	87.0	116	13.0	895
1	3241	MIAMI GARDENS EL	320	93.3	23	6.7	343	292	92.1	25	7.9	317
5	3261	MIAMI HEIGHTS EL	1,171	77.2	346	22.8	1,517	1,167	76.6	357	23.4	1,524
6	3301	MIAMI PARK EL	439	92.4	36	7.6	475	471	93.3	34	6.7	505
4	3341	MIAMI SHORES EL	758	96.4	28	3.6	786	785	96.4	29	3.6	814
4	3381	MIAMI SPRINGS EL	642	92.6	51	7.4	693	551	87.5	79	12.5	630

Note. Schools highlighted in yellow had the greatest enrollment loss (top 25th percentile) in their grade organization during 2012.

(table continues)



**Table 1, continued**

Region	Location	School	2011-12					2012-13				
			Traditional		Charter		Total <sup>a</sup>	Traditional		Charter		Total <sup>a</sup>
			n	%	n	%		n	%	N	%	
4	3431	PHYLLIS R MILLER EL	677	97.8	15	2.2	692	700	98.3	12	1.7	712
5	3541	ROBERT RUSSA MOTON EL	403	99.5	2	0.5	405	338	98.5	5	1.5	343
1	3661	NATURAL BRIDGE EL	644	98.8	8	1.2	652	631	98.6	9	1.4	640
1	3701	NORLAND EL	630	93.2	46	6.8	676	627	93.3	45	6.7	672
1	3741	NORTH BEACH EL	1,005	98.9	11	1.1	1,016	1,024	98.1	20	1.9	1,044
6	3781	BARBARA J. HAWKINS EL	349	89.9	39	10.1	388	329	89.9	37	10.1	366
1	3861	NORTH GLADE EL	340	78.2	95	21.8	435	357	78.5	98	21.5	455
1	3901	NORTH HIALEAH EL	651	94.5	38	5.5	689	603	93.9	39	6.1	642
1	3941	NORTH MIAMI EL	611	98.1	12	1.9	623	605	97.4	16	2.6	621
1	3981	NORTH TWIN LAKES EL	622	96.6	22	3.4	644	589	96.2	23	3.8	612
1	4001	NORWOOD EL	486	98.8	6	1.2	492	523	99.2	4	0.8	527
1	4021	OAK GROVE EL	707	96.7	24	3.3	731	689	96.4	26	3.6	715
1	4061	OJUS EL	917	98.8	11	1.2	928	910	98.6	13	1.4	923
4	4071	OLINDA EL	322	93.6	22	6.4	344	357	93.2	26	6.8	383
5	4091	OLYMPIA HEIGHTS EL	527	91.3	50	8.7	577	514	91.6	47	8.4	561
6	4121	DR ROBERT B INGRAM	361	82.6	76	17.4	437	386	84.8	69	15.2	455
6	4171	ORCHARD VILLA EL	436	92.8	34	7.2	470	464	91.0	46	9.0	510
5	4221	PALMETTO EL	625	95.7	28	4.3	653	624	96.4	23	3.6	647
1	4241	PALM LAKES EL	896	93.3	64	6.7	960	865	92.0	75	8.0	940
1	4261	PALM SPRINGS EL	753	94.6	43	5.4	796	725	93.8	48	6.2	773
1	4281	PALM SPRINGS NORTH EL	991	80.2	245	19.8	1,236	1,018	80.1	253	19.9	1,271
1	4301	PARKVIEW EL	423	97.7	10	2.3	433	402	98.8	5	1.2	407
6	4341	PARKWAY EL	374	96.9	12	3.1	386	382	95.3	19	4.7	401
5	4381	PERRINE ELEMENTARY	781	94.2	48	5.8	829	773	93.9	50	6.1	823
6	4401	KELSEY L PHARR EL	379	100.0	0	0.0	379	312	100.0	0	0.0	312
5	4421	PINECREST EL	1,027	98.7	14	1.3	1,041	1,043	98.9	12	1.1	1,055
5	4441	PINE LAKE EL	470	87.0	70	13.0	540	429	85.5	73	14.5	502
6	4461	PINE VILLA EL	310	80.3	76	19.7	386	430	84.8	77	15.2	507
4	4491	HENRY E S REEVES EL	747	95.3	37	4.7	784	797	95.6	37	4.4	834
6	4501	POINCIANA PARK EL	439	98.0	9	2.0	448	433	96.7	15	3.3	448
5	4511	DR GILBERT L PORTER	797	90.2	87	9.8	884	784	89.2	95	10.8	879

Note. Schools highlighted in yellow had the greatest enrollment loss (top 25th percentile) in their grade organization during 2012.

(table continues)

Table 1, continued

Region	Location	School	2011-12				Total <sup>a</sup>	2012-13				Total <sup>a</sup>
			Traditional		Charter			Traditional		Charter		
			n	%	n	%		n	%	N	%	
1	4541	RAINBOW PARK EL	393	94.7	22	5.3	415	379	93.8	25	6.2	404
5	4581	REDLAND EL	900	81.3	207	18.7	1,107	883	79.1	234	20.9	1,117
5	4611	REDONDO EL	683	87.5	98	12.5	781	697	86.6	108	13.4	805
6	4651	E F BECKFORD/RICHMOND	253	95.5	12	4.5	265	283	94.3	17	5.7	300
4	4681	RIVERSIDE EL	938	54.8	773	45.2	1,711	1,118	57.3	832	42.7	1,950
4	4721	ROCKWAY EL	454	95.8	20	4.2	474	442	93.6	30	6.4	472
5	4741	ROYAL GREEN EL	627	85.1	110	14.9	737	594	82.2	129	17.8	723
5	4761	ROYAL PALM EL	535	93.4	38	6.6	573	528	92.5	43	7.5	571
1	4801	G K EDELMAN/SABAL PALM	736	98.8	9	1.2	745	746	98.5	11	1.5	757
6	4841	SANTA CLARA EL	598	81.6	135	18.4	733	600	83.9	115	16.1	715
1	4881	SCOTT LAKE EL	551	97.0	17	3.0	568	550	97.9	12	2.1	562
4	4921	SEMINOLE EL	530	88.3	70	11.7	600	522	85.6	88	14.4	610
4	4961	SHADOWLAWN EL	295	87.8	41	12.2	336	326	91.6	30	8.4	356
4	5001	SHENANDOAH EL	1,037	94.4	62	5.6	1,099	1,040	93.8	69	6.2	1,109
1	5021	BEN SHEPPARD EL	1,023	90.1	113	9.9	1,136	1,025	90.5	108	9.5	1,133
4	5041	SILVER BLUFF ELEMENTARY	545	94.6	31	5.4	576	583	92.0	51	8.0	634
5	5061	DR. CARLOS J. FINLAY	459	93.7	31	6.3	490	511	94.8	28	5.2	539
6	5081	SKYWAY EL	427	87.9	59	12.1	486	398	89.8	45	10.2	443
1	5091	SOUTH POINTE ELEMENTARY	587	98.7	8	1.3	595	600	98.4	10	1.6	610
5	5121	SNAPPER CREEK EL	530	90.0	59	10.0	589	516	89.6	60	10.4	576
4	5201	SOUTH HIALEAH EL	1,207	96.0	50	4.0	1,257	1,232	95.6	57	4.4	1,289
5	5281	SOUTH MIAMI HEIGHTS EL	648	83.2	131	16.8	779	643	80.3	158	19.7	801
4	5321	SOUTHSIDE EL	828	95.8	36	4.2	864	849	94.4	50	5.6	899
4	5361	SPRINGVIEW EL	503	89.7	58	10.3	561	489	87.8	68	12.2	557
4	5381	E. W. F. STIRRUP EL	857	83.8	166	16.2	1,023	862	83.8	167	16.2	1,029
5	5421	SUNSET PARK EL	655	86.3	104	13.7	759	661	84.6	120	15.4	781
4	5431	SWEETWATER EL	908	91.7	82	8.3	990	883	91.8	79	8.2	962
4	5441	SYLVANIA HEIGHTS EL	556	94.4	33	5.6	589	545	94.5	32	5.5	577
1	5481	TREASURE ISLAND EL	663	87.8	92	12.2	755	703	88.3	93	11.7	796
5	5521	TROPICAL EL	435	94.4	26	5.6	461	493	93.2	36	6.8	529
4	5561	FRANCES S. TUCKER EL	399	91.9	35	8.1	434	411	91.1	40	8.9	451

Note. Schools highlighted in yellow had the greatest enrollment loss (top 25th percentile) in their grade organization during 2012.

(table continues)



**Table 1, continued**

Region	Location	School	2011-12					2012-13				
			Traditional		Charter		Total <sup>a</sup>	Traditional		Charter		Total <sup>a</sup>
			n	%	n	%		n	%	N	%	
1	5601	TWIN LAKES EL	659	95.6	30	4.4	689	614	94.9	33	5.1	647
5	5641	VILLAGE GREEN EL	393	91.2	38	8.8	431	389	90.3	42	9.7	431
1	5711	MAE M. WALTERS EL	777	93.8	51	6.2	828	736	92.9	56	7.1	792
5	5791	WEST HOMESTEAD EL	650	73.9	229	26.1	879	697	75.9	221	24.1	918
4	5831	HENRY S. WEST LAB.	--	--	--	--	--	263	100.0	0	0.0	263
6	5931	PHILLIS WHEATLEY EL	203	59.9	136	40.1	339	246	66.3	125	33.7	371
5	5951	WHISPERING PINES EL	680	96.9	22	3.1	702	656	96.8	22	3.2	678
6	5971	NATHAN B. YOUNG EL	329	94.5	19	5.5	348	379	93.1	28	6.9	407
5	5981	DR. EDWARD L. WHIGHAM	635	72.0	247	28.0	882	742	74.8	250	25.2	992
6	5991	CHARLES D. WYCHE, JR.	783	86.4	123	13.6	906	764	84.5	140	15.5	904
9	9991	MIAMI-DADE COUNTY	108,100	89.9	12,115	10.1	120,215	108,050	89.3	12,891	10.7	120,941
<b>K - 8 CENTERS</b>												
4	0071	EUGENIA B THOMAS K-8 C	1,612	87.3	235	12.7	1,847	1,630	85.3	280	14.7	1,910
6	0073	MANDARIN LAKES K-8 ACAD	1,389	61.3	876	38.7	2,265	1,120	52.4	1,019	47.6	2,139
1	0091	BOB GRAHAM ED CENTER	1,886	94.2	117	5.8	2,003	1,738	92.9	132	7.1	1,870
4	0122	DR ROLANDO ESPINOSA	1,747	85.2	303	14.8	2,050	1,651	83.4	329	16.6	1,980
1	0231	AVENTURA WATERWAYS PREP	1,840	74.6	627	25.4	2,467	1,914	75.8	611	24.2	2,525
1	0241	RK BROAD/BAY HARBOR	1,207	98.5	18	1.5	1,225	1,265	98.4	21	1.6	1,286
5	0451	BOWMAN ASHE/DOOLIN K-8	1,536	88.4	202	11.6	1,738	1,419	84.2	267	15.8	1,686
5	0651	CAMPBELL DRIVE K-8 CEN	666	68.7	303	31.3	969	768	68.9	347	31.1	1,115
1	0761	FIENBERG/FISHER K-8	885	98.4	14	1.6	899	862	97.5	22	2.5	884
4	0961	CORAL GABLES PREP ACAD	708	100.0	0	0.0	708	797	100.0	0	0.0	797
4	1121	CORAL WAY K-8 CENTER	1,582	96.8	52	3.2	1,634	1,532	95.8	68	4.3	1,600
5	1331	DEVON AIRE K-8 CENTER	1,548	95.5	73	4.5	1,621	1,547	95.3	77	4.7	1,624
6	1401	CHARLES R DREW EL	246	95.0	13	5.0	259	369	96.6	13	3.4	382
6	1441	PAUL LAURENCE DUNBAR E	341	55.2	277	44.8	618	405	61.6	252	38.4	657
4	1601	EDISON PARK EL	367	93.1	27	6.9	394	408	93.8	27	6.2	435
4	1681	LILLIE C EVANS K-8 CEN	440	97.3	12	2.7	452	468	97.5	12	2.5	480
4	1721	EVERGLADES K-8 CENTER	1,238	96.6	43	3.4	1,281	1,188	96.3	46	3.7	1,234
4	2041	BEN FRANKLIN K-8 CENTER	508	94.4	30	5.6	538	528	95.1	27	4.9	555
5	2701	KENWOOD K-8 CENTER	1,081	94.8	59	5.2	1,140	1,060	94.6	61	5.4	1,121

Note. Schools highlighted in yellow had the greatest enrollment loss (top 25th percentile) in their grade organization during 2012.

(table continues)

**Table 1, continued**

Region	Location	School	2011-12					2012-13				
			Traditional		Charter		Total <sup>a</sup>	Traditional		Charter		Total <sup>a</sup>
			n	%	n	%		n	%	N	%	
4	2741	KEY BISCAWAYNE K-8 CNTR	1,328	99.3	10	0.7	1,338	1,321	99.6	5	0.4	1,326
5	2881	LEEWOOD K-8 CENTER	814	97.3	23	2.7	837	794	96.2	31	3.8	825
5	2901	LEISURE CITY K-8 CNTR	1,103	91.1	108	8.9	1,211	1,120	89.2	135	10.8	1,255
1	2911	LINDA LENTIN K-8 CNTR	914	97.8	21	2.2	935	974	98.3	17	1.7	991
1	3281	MIAMI LAKES K-8 CENTER	1,534	98.6	21	1.4	1,555	1,392	98.4	23	1.6	1,415
1	3421	MARCUS A MILAM K-8 CN	1,126	96.7	38	3.3	1,164	1,040	92.9	80	7.1	1,120
6	3501	MORNINGSIDE EL	440	96.1	18	3.9	458	454	97.0	14	3.0	468
1	3581	MYRTLE GROVE EL	391	92.2	33	7.8	424	436	93.6	30	6.4	466
5	3621	COCONUT PALM K-8 ACAD	1,236	74.0	435	26.0	1,671	1,230	73.7	440	26.3	1,670
6	3821	NORTH COUNTY K8 CENTER	336	90.6	35	9.4	371	363	90.5	38	9.5	401
5	4031	GATEWAY ENV K-8 LEARN	1,580	67.7	755	32.3	2,335	1,646	66.9	816	33.1	2,462
5	4391	IRVING & BEATR PESKOE	634	84.9	113	15.1	747	687	85.6	116	14.4	803
5	4691	JANE S ROBERTS K-8 CN	899	85.5	152	14.5	1,051	899	85.3	155	14.7	1,054
1	5005	DAVID LAWRENCE JR. K-8	1,581	99.1	15	0.9	1,596	1,654	99.1	15	0.9	1,669
1	5051	ERNEST R GRAHAM K-8 CE	1,399	90.5	147	9.5	1,546	1,457	90.2	158	9.8	1,615
4	5101	JOHN I SMITH K-8 CENTER	1,285	82.3	277	17.7	1,562	1,326	81.0	312	19.0	1,638
1	5141	HUBERT O. SIBLEY K-8	767	96.7	26	3.3	793	863	97.5	22	2.5	885
4	5241	SOUTH MIAMI K-8 CENTER	822	93.9	53	6.1	875	812	95.9	35	4.1	847
5	5671	VINELAND K-8 CENTER	853	97.8	19	2.2	872	857	97.4	23	2.6	880
6	5861	DR. H. MACK/W. LITTLE	411	89.9	46	10.1	457	441	95.5	21	4.5	462
4	5901	CARRIE MEEK/WESTVIEW K8	458	95.2	23	4.8	481	567	95.8	25	4.2	592
5	5961	WINSTON PARK K-8 CENTER	1,339	93.2	98	6.8	1,437	1,304	93.2	95	6.8	1,399
9	9992	MIAMI-DADE COUNTY	43,893	88.4	5,757	11.6	49,650	44,084	87.6	6,225	12.4	50,309
<b>MIDDLE SCHOOLS</b>												
5	5003	SOUTH DADE MIDDLE SCH	1,325	80.0	331	20.0	1,656	1,264	78.0	356	22.0	1,620
6	6011	ALLAPATTAH MIDDLE SCH.	624	69.1	279	30.9	903	584	65.0	314	35.0	898
5	6021	ARVIDA MIDDLE SCHOOL	1,278	94.2	78	5.8	1,356	1,270	93.6	87	6.4	1,357
1	6023	ANDOVER MIDDLE SCHOOL	1,207	96.2	48	3.8	1,255	994	95.2	50	4.8	1,044
6	6031	BROWNSVILLE MIDDLE SCH.	672	76.6	205	23.4	877	783	76.5	241	23.5	1,024
5	6041	PAUL W. BELL MIDDLE	675	82.3	145	17.7	820	583	78.3	162	21.7	745
6	6051	CAROL CITY MIDDLE SCH.	680	82.2	147	17.8	827	589	80.8	140	19.2	729

Note. Schools highlighted in yellow had the greatest enrollment loss (top 25th percentile) in their grade organization during 2012.

(table continues)

**Table 1, continued**

Region	Location	School	2011-12				2012-13					
			Traditional		Charter		Total <sup>a</sup>	Traditional		Charter		Total <sup>a</sup>
			n	%	n	%		n	%	N	%	
5	6052	ZELDA GLAZER MIDDLE SCH	1,458	84.0	277	16.0	1,735	1,301	82.2	281	17.8	1,582
6	6061	CAMPBELL DRIVE MIDDLE	642	38.2	1,039	61.8	1,681	554	34.8	1,037	65.2	1,591
5	6081	CENTENNIAL MIDDLE SCH.	918	82.6	193	17.4	1,111	710	68.3	330	31.7	1,040
6	6091	CITRUS GROVE MIDDLE SCH	1,007	84.7	182	15.3	1,189	1,012	82.6	213	17.4	1,225
5	6111	CUTLER RIDGE MIDDLE SCH	730	91.9	64	8.1	794	1,024	82.1	223	17.9	1,247
4	6121	RUBEN DARIO MIDDLE SCH	740	72.3	283	27.7	1,023	693	42.7	930	57.3	1,623
6	6141	CHARLES R. DREW MIDDLE	439	88.5	57	11.5	496	258	100.0	0	0.0	258
4	6151	DORAL MIDDLE SCHOOL	545	98.9	6	1.1	551	225	97.0	7	3.0	232
1	6161	LAWTON CHILES MIDDLE	957	74.7	324	25.3	1,281	696	65.8	361	34.2	1,057
1	6171	HENRY H. FILER MIDDLE	1,153	87.0	172	13.0	1,325	1,138	86.3	180	13.7	1,318
5	6211	GLADES MIDDLE SCHOOL	1,134	93.6	77	6.4	1,211	1,181	92.8	92	7.2	1,273
5	6221	HAMMOCKS MIDDLE SCHOOL	1,181	89.9	132	10.1	1,313	1,165	90.1	128	9.9	1,293
6	6231	HIALEAH MIDDLE SCHOOL	870	83.8	168	16.2	1,038	896	84.0	171	16.0	1,067
1	6241	HIGHLAND OAKS MIDDLE	1,234	79.5	319	20.5	1,553	1,245	79.2	326	20.8	1,571
6	6251	HOMESTEAD MIDDLE SCHOOL	633	76.9	190	23.1	823	576	73.7	206	26.3	782
6	6281	THOMAS JEFFERSON MID.	420	71.9	164	28.1	584	387	61.6	241	38.4	628
1	6301	JOHN F. KENNEDY MIDDLE	1,392	95.6	64	4.4	1,456	1,291	96.1	53	3.9	1,344
4	6331	KINLOCH PARK MIDDLE SCH	1,174	93.5	82	6.5	1,256	1,228	92.8	95	7.2	1,323
1	6351	LAKE STEVENS MIDDLE SCH	636	77.1	189	22.9	825	685	79.7	175	20.3	860
6	6361	JOSE DE DIEGO MIDDLE	496	48.1	535	51.9	1,031	586	52.9	521	47.1	1,107
6	6391	MADISON MIDDLE SCHOOL	574	72.5	218	27.5	792	526	70.5	220	29.5	746
4	6411	HORACE MANN MIDDLE SCH	759	67.5	365	32.5	1,124	713	67.8	338	32.2	1,051
1	6421	JOSE MARTI MIDDLE SCH.	446	98.7	6	1.3	452	215	98.2	4	1.8	219
6	6431	MAYS COMM. MIDDLE SCH.	349	81.2	81	18.8	430	156	72.6	59	27.4	215
5	6441	HOWARD D. MCMILLAN MID	792	74.4	272	25.6	1,064	833	76.8	252	23.2	1,085
6	6481	MIAMI EDISON MIDDLE SCH	522	75.5	169	24.5	691	325	65.1	174	34.9	499
1	6501	MIAMI LAKES MIDDLE SCH.	825	79.7	210	20.3	1,035	860	69.8	372	30.2	1,232
4	6521	MIAMI SPRINGS MIDDLE	1,611	81.3	371	18.7	1,982	1,533	78.9	411	21.1	1,944
1	6541	NAUTILUS MIDDLE SCHOOL	1,148	86.6	178	13.4	1,326	1,095	82.6	231	17.4	1,326
1	6571	NORLAND MIDDLE SCHOOL	743	96.4	28	3.6	771	814	96.0	34	4.0	848
6	6591	NORTH DADE MIDDLE SCH.	657	93.1	49	6.9	706	743	76.8	224	23.2	967

Note. Schools highlighted in yellow had the greatest enrollment loss (top 25th percentile) in their grade organization during 2012.

(table continues)

**Table 1, continued**

Region	Location	School	2011-12					2012-13				
			Traditional		Charter		Total <sup>a</sup>	Traditional		Charter		Total <sup>a</sup>
			n	%	n	%		n	%	N	%	
1	6611	COUNTRY CLUB MIDDLE SCH	1,374	81.0	322	19.0	1,696	1,330	78.3	368	21.7	1,698
6	6631	NORTH MIAMI MIDDLE SCH.	983	76.9	296	23.1	1,279	954	75.6	308	24.4	1,262
1	6681	PALM SPRINGS MIDDLE SCH	1,164	84.2	219	15.8	1,383	1,273	77.0	380	23.0	1,653
5	6701	PALMETTO MIDDLE SCHOOL	1,171	98.1	23	1.9	1,194	1,115	96.8	37	3.2	1,152
6	6721	PARKWAY MIDDLE COMM SCH	394	90.2	43	9.8	437	212	97.2	6	2.8	218
4	6741	PONCE DE LEON MIDDLE	1,179	92.2	100	7.8	1,279	1,067	90.4	113	9.6	1,180
1	6751	HIALEAH GARDENS MIDDLE	1,870	81.0	440	19.0	2,310	1,839	81.6	416	18.4	2,255
6	6761	REDLAND MIDDLE SCHOOL	586	58.9	409	41.1	995	492	48.7	519	51.3	1,011
5	6771	JORGE MAS CANOSA MIDDLE	1,949	90.0	216	10.0	2,165	2,042	89.9	230	10.1	2,272
5	6781	RICHMOND HEIGHTS MIDDLE	669	83.0	137	17.0	806	560	78.4	154	21.6	714
5	6801	RIVIERA MIDDLE SCHOOL	817	94.0	52	6.0	869	827	93.4	58	6.6	885
4	6821	ROCKWAY MIDDLE SCHOOL	1,334	92.8	103	7.2	1,437	1,138	89.7	131	10.3	1,269
4	6841	SHENANDOAH MIDDLE SCH.	1,182	90.4	125	9.6	1,307	1,186	89.4	140	10.6	1,326
5	6861	SOUTHWOOD MIDDLE SCHOOL	1,502	98.9	17	1.1	1,519	1,401	97.8	31	2.2	1,432
4	6881	SOUTH MIAMI MID. COMM.	1,025	95.2	52	4.8	1,077	1,021	95.6	47	4.4	1,068
5	6901	W. R. THOMAS MIDDLE	734	87.1	109	12.9	843	963	90.5	101	9.5	1,064
5	6921	LAMAR LOUISE CURRY MID.	1,109	88.9	138	11.1	1,247	1,116	90.0	124	10.0	1,240
4	6961	WEST MIAMI MIDDLE SCH.	1,063	85.5	180	14.5	1,243	1,003	81.9	221	18.1	1,224
6	6981	WESTVIEW MIDDLE SCHOOL	379	98.4	6	1.6	385	156	99.4	1	0.6	157
<b>SENIOR HIGH SCHOOLS</b>												
1	7011	AMERICAN SENIOR HIGH	2,009	78.6	546	21.4	2,555	2,042	76.7	620	23.3	2,662
1	7048	ALONZO & TRACY MOURNING	1,642	98.0	33	2.0	1,675	1,828	97.2	53	2.8	1,881
1	7049	WESTLAND HIALEAH SENIOR	1,939	91.2	188	8.8	2,127	2,085	90.6	217	9.4	2,302
5	7051	G. HOLMES BRADDOCK SR	3,212	90.0	356	10.0	3,568	3,305	88.4	435	11.6	3,740
4	7071	CORAL GABLES SENIOR HI.	3,275	92.8	254	7.2	3,529	3,366	93.2	244	6.8	3,610
1	7111	HIALEAH SENIOR HIGH SCH	2,939	89.7	338	10.3	3,277	2,970	87.4	427	12.6	3,397
5	7121	JOHN A. FERGUSON SENIOR	4,240	97.3	117	2.7	4,357	4,130	95.9	178	4.1	4,308
6	7131	HIALEAH-MIAMI LAKES SR.	1,697	75.6	549	24.4	2,246	1,699	73.8	603	26.2	2,302
1	7141	DR. MICHAEL M. KROP SR.	2,784	98.1	53	1.9	2,837	2,667	96.9	84	3.1	2,751
6	7151	HOMESTEAD SENIOR HIGH	1,940	64.7	1,057	35.3	2,997	1,863	58.3	1,335	41.7	3,198
1	7191	HIALEAH GARDENS HIGH SC	2,570	81.3	591	18.7	3,161	2,909	81.2	673	18.8	3,582

Note. Schools highlighted in yellow had the greatest enrollment loss (top 25th percentile) in their grade organization during 2012.

(table continues)

**Table 1, continued**

Region	Location	School	2011-12					2012-13				
			Traditional		Charter		Total <sup>a</sup>	Traditional		Charter		Total <sup>a</sup>
			n	%	n	%		n	%	N	%	
1	7201	MIAMI BEACH SENIOR HIGH	2,413	97.1	72	2.9	2,485	2,478	96.3	96	3.7	2,574
6	7231	MIAMI CAROL CITY SENIOR	1,817	78.2	508	21.8	2,325	1,793	77.2	531	22.8	2,324
4	7241	RONALD W. REAGAN/DORAL	2,267	87.1	336	12.9	2,603	2,142	83.7	418	16.3	2,560
6	7251	MIAMI CENTRAL SENIOR HI	1,828	85.5	310	14.5	2,138	1,923	87.4	277	12.6	2,200
4	7271	MIAMI CORAL PARK SENIOR	2,904	88.2	390	11.8	3,294	2,951	86.6	456	13.4	3,407
6	7301	MIAMI EDISON SENIOR HI.	927	78.7	251	21.3	1,178	923	76.5	284	23.5	1,207
6	7341	MIAMI JACKSON SENIOR HI	1,176	85.9	193	14.1	1,369	1,348	86.0	219	14.0	1,567
5	7361	MIAMI KILLIAN SENIOR HI	2,803	95.2	142	4.8	2,945	2,499	94.6	143	5.4	2,642
6	7381	MIAMI NORLAND SENIOR HI	1,418	90.1	155	9.9	1,573	1,631	90.2	178	9.8	1,809
6	7411	MIAMI NORTHWESTERN SR.	1,637	89.4	195	10.6	1,832	1,636	88.5	212	11.5	1,848
5	7431	MIAMI PALMETTO SENIOR	2,890	98.0	59	2.0	2,949	2,794	98.3	47	1.7	2,841
4	7461	MIAMI SENIOR HIGH SCH.	2,733	92.4	226	7.6	2,959	2,794	91.3	266	8.7	3,060
4	7511	MIAMI SPRINGS SENIOR HI	1,910	90.4	204	9.6	2,114	1,879	87.5	268	12.5	2,147
5	7531	MIAMI SUNSET SENIOR HI.	2,385	95.1	123	4.9	2,508	2,121	93.2	154	6.8	2,275
6	7541	NORTH MIAMI BEACH SR.	2,162	96.4	81	3.6	2,243	2,106	95.2	106	4.8	2,212
6	7591	NORTH MIAMI SENIOR HIGH	2,626	88.2	352	11.8	2,978	2,592	85.6	437	14.4	3,029
5	7701	SOUTH DADE SENIOR HIGH	3,421	92.7	270	7.3	3,691	3,360	90.0	373	10.0	3,733
4	7721	SOUTH MIAMI SENIOR HIGH	2,243	94.6	128	5.4	2,371	2,229	91.9	197	8.1	2,426
6	7731	MIAMI SOUTHRIDGE SENIOR	2,150	85.2	372	14.8	2,522	2,182	84.5	400	15.5	2,582
5	7741	SOUTHWEST MIAMI SENIOR	3,020	95.7	136	4.3	3,156	3,106	95.2	156	4.8	3,262
1	7751	BARBARA GOLEMAN SENIOR	2,057	79.0	547	21.0	2,604	1,834	74.2	638	25.8	2,472
5	7781	FELIX VARELA SENIOR HI	3,016	96.8	101	3.2	3,117	3,155	96.0	132	4.0	3,287
6	7791	BOOKER T. WASHINGTON SR	960	71.3	387	28.7	1,347	946	70.2	402	29.8	1,348

Note. Schools highlighted in yellow had the greatest enrollment loss (top 25th percentile) in their grade organization during 2012. Only traditional public schools, with assigned residence students, and without a school wide magnet program are included. Traditional school counts are based on actual full time equivalent student membership. Charter counts are projected based on residence school data provided by the department of transportation. Howard Doolin and Bowman F. Ashe are shown as combined during both years. Schools for Advanced Study are excluded. Jose Marti and Mays are being reorganized so loss may be understated.

<sup>a</sup> The values for Total, listed in the eighth and thirteenth columns of the table, are estimates of the total number of students in the attendance zone of the school listed in the third column of the table.