



# Evaluation Matters

---

Volume 5, Number 4

January 2015

Steven M. Urdegar, Ph.D., Director

## Charter and Traditional Schools: *An Analysis of Student Entry and Movement, 2014-15 to 2015-16*

### 1. What is the purpose of this report?

Changes to the proportion of the students enrolled at the charter and traditional schools in the M-DCPS result from the entry of students new to the District and/or student movement into and between schools. As of October 2015, 16.6% of all M-DCPS students attended a charter school. The principal purpose of this report is to examine the entries into and transfers between charter and traditional schools from October 2014 to October 2015.

### 2. Which populations were targeted in this report?

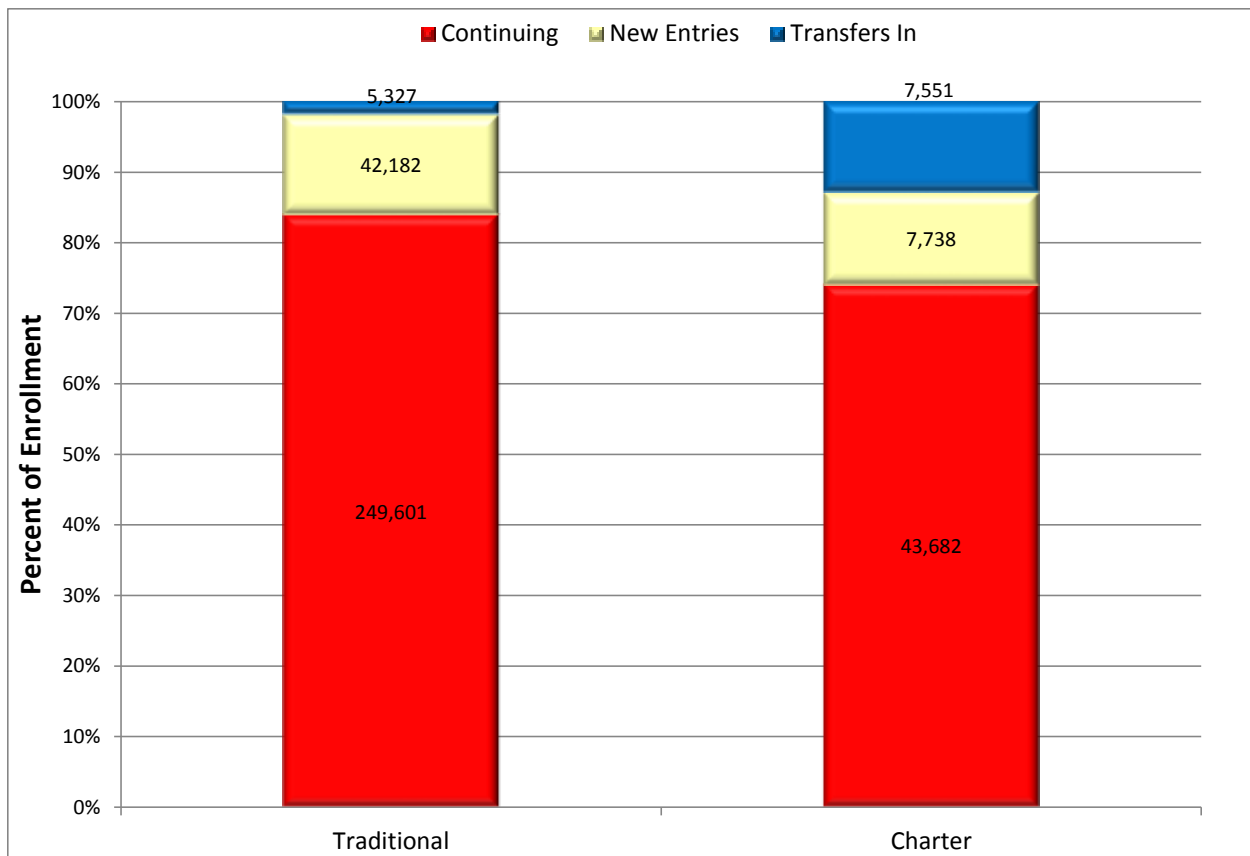
The sample for the study consisted of two groups: (a) students in the M-DCPS who attended the traditional or the charter schools during both 2014-15 and 2015-16 and (b) students new to the M-DCPS in 2015-16. Only students classified as “Active” and “Other” who were enrolled during October of a given school year were included in this study.

### 3. How were the data for this report collected and analyzed?

Data were obtained from the student database files and student assessment records. Patterns of student transitions into the charter schools between October 2014 and October 2015 were examined by selected demographic and preliminary achievement categories, and presented via descriptive statistics. A projected estimate of potential enrollment at traditional schools was obtained based on the assumption that current charter school students would have attended their residence schools, based on established school attendance boundaries, had they not opted to enroll in a charter school.

### 4. What are the sources of enrollment at the charter and traditional schools?

Enrollment patterns were defined in the following way: (a) **continuing students** who remain within the same governance structure (i.e. charter or traditional) from one year (October 2014) to the next (October 2015), (b) **transfer students** who move from one governance structure to the other from one year to the next, and (c) **new entries** (October 2015). The number of students who transfer **into** one governance structure equals the number of students who transfer **out of** the other governance structure. Figure 1 depicts the enrollment at the charter and the traditional schools comprising each group of students as of October 2015.



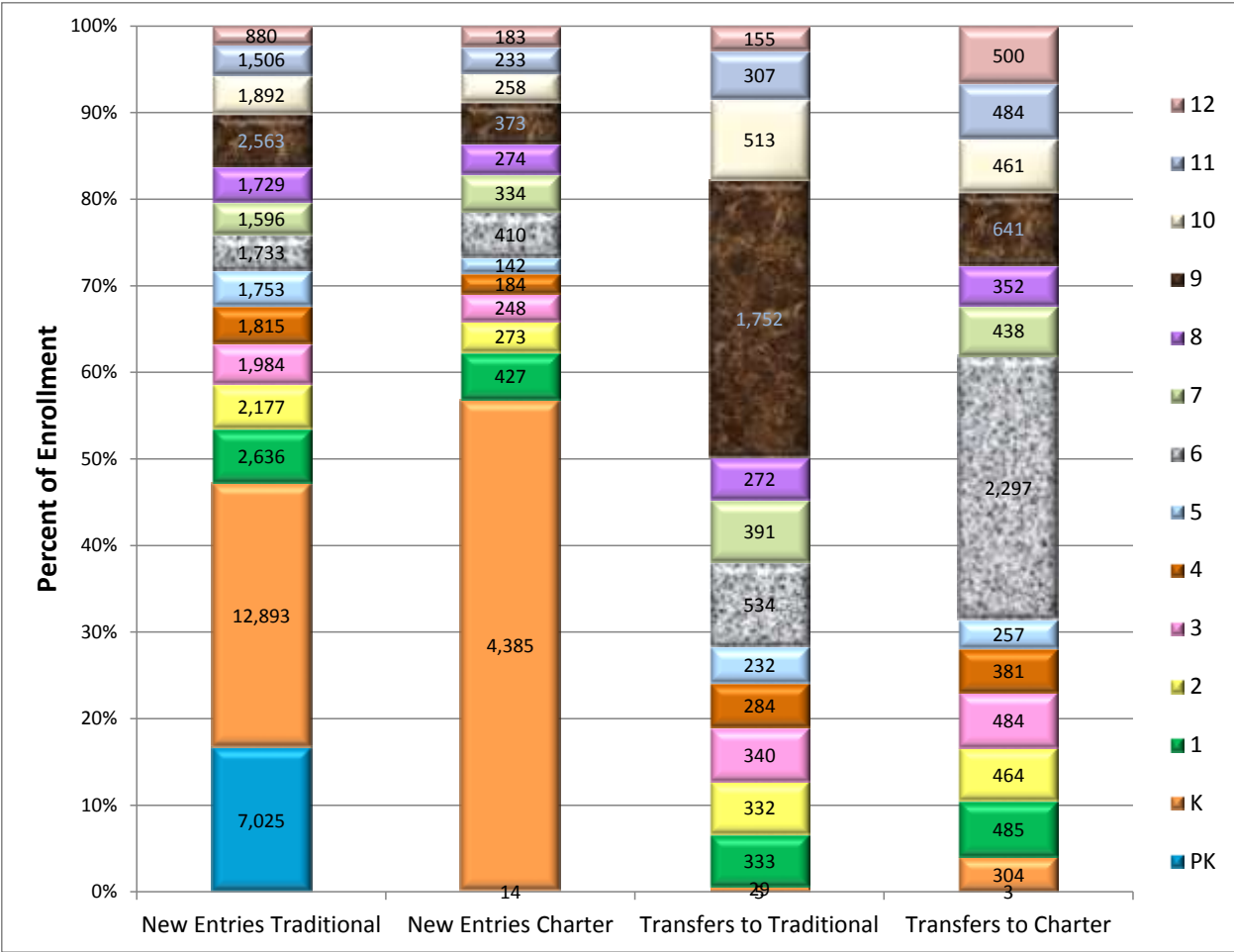
**Figure 1. Enrollment Sources, 2015**

Based on changes to the student population from October 2014 to October 2015, the sources of enrollment in the Traditional and Charter schools were classified into three categories: Continuing, New Entries, and Transfers In.

- The percentage of charter schools' students who were new entries (13.1%, n=7,738) was similar to what was seen at the traditional schools (14.2%, n=42,182).
- The percentage of students who remained enrolled in the traditional schools from 2014-15 to 2015-16 (84.0%, n=249,601) was greater than the percentage of students who remained enrolled in the charter schools (74.1%, n=43,682).
- Transfers between governance structures accounted for a large portion of the difference.
  - 5,327 students transferred from the charter schools to the traditional schools, representing about 9.4% of charter school enrollment, but 1.8% of the receiving traditional school enrollment.
  - 7,551 students transferred from the traditional schools to the charter schools, representing about 2.5% of traditional school enrollment, but 12.8% of the receiving charter school enrollment.

## 5. How do the movement categories break down by grade level?

Although the students in Grades 2 through 11 represent a similar percentage of the total enrollment at the charter and traditional schools, the entries and transfers tend to cluster at specific grades resulting in different patterns within each governance structure. Figure 2 pictures each of the two sources of movement in the charter and the traditional schools, disaggregated by grade level.



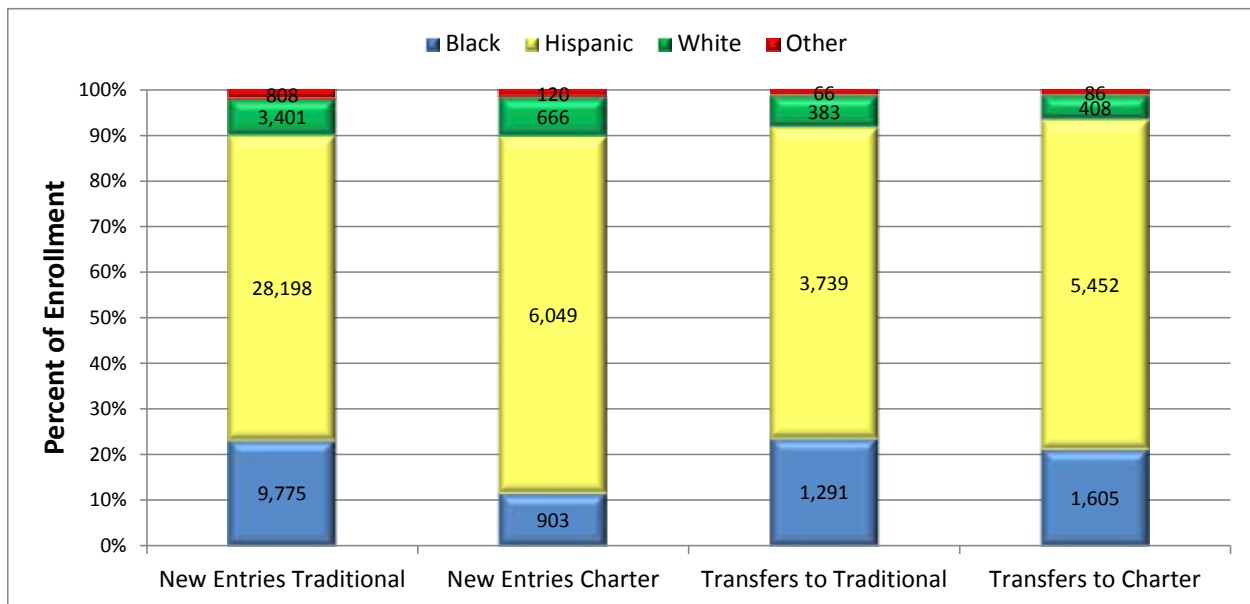
**Figure 2. Movement type by grade level**

- Entries
  - Students in prekindergarten and kindergarten represent over half of the new entries into both the traditional schools (47.2%, n=19,918) and the charter schools (56.8%, n=4,399).
  - Virtually all prekindergarten students in the District enter traditional schools.
- Transfers
  - More sixth graders (n=2,297) transferred to the charter schools from the traditional schools than at any other grade, representing 30.4% of the traditional to charter school transfers.
  - More ninth graders (n=1,752) transferred to the traditional schools from the charters schools than at any other grade, representing 32.0% of the charter to traditional school transfers.

**6. How do the movement categories break down by demographic subgroup?**

Figure 3 -6 picture each of the two sources of movement at the charter and the traditional schools disaggregated by selected demographic subgroups.

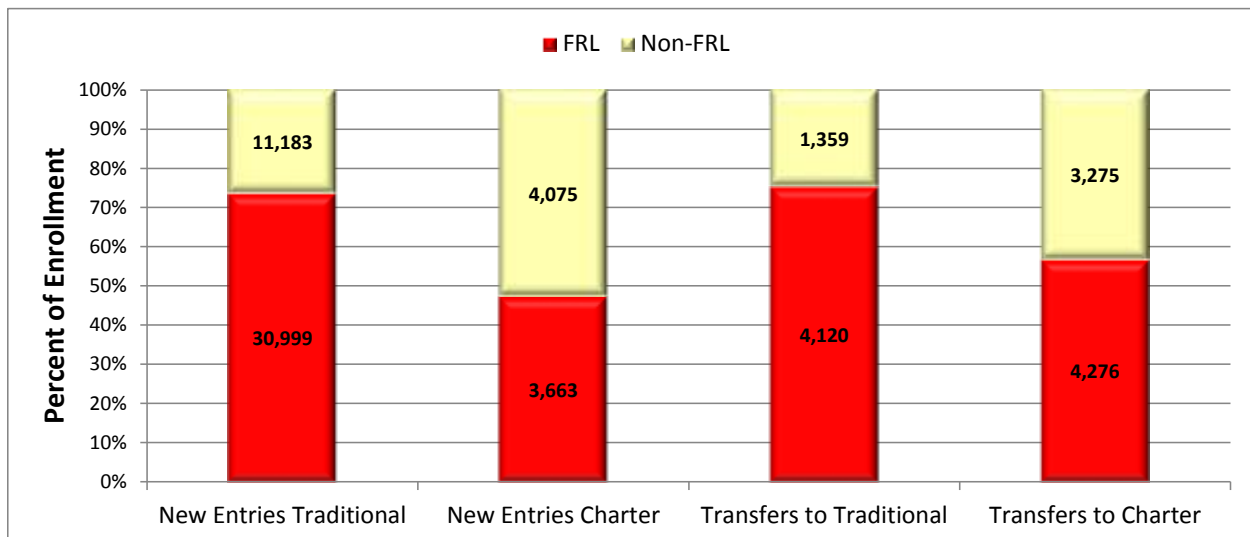
- **Race/Ethnic classification.**



**Figure 3. Movement type by Race/Ethnic classification**

- Hispanic students are over-represented in new entries into the charter schools, 78.2%, compared to the traditional schools, 66.8%.
- Black students are under-represented in new entries into the charter schools, 12.7%, compared to the traditional schools, 23.2%.

- **Free/Reduced Lunch classification**



**Figure 4. Movement type by Free/Reduced price lunch classification**

- Students who are eligible for Free/Reduced Price Lunch (FRL) are over-represented in new entries into the traditional schools at 73.5% compared to the charter schools at 47.3%.

- English Language Learner classification

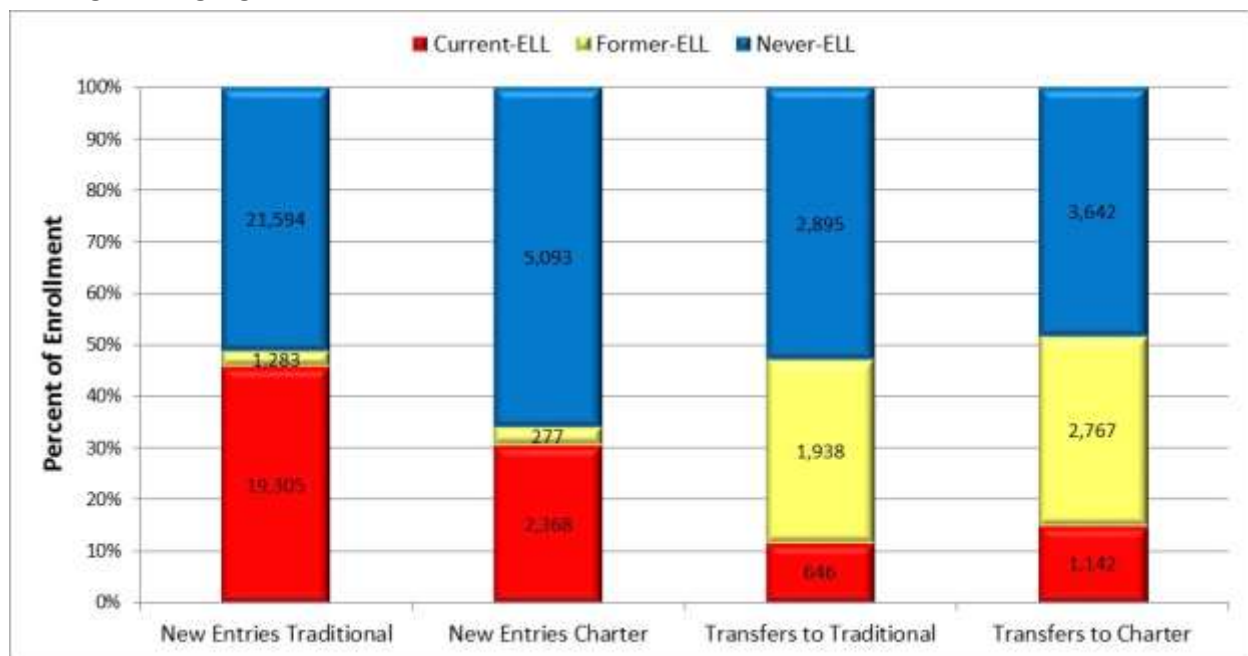


Figure 5. Movement type by English Language Learner (ELL) classification

- Students classified as Current English Language Learners (Current-ELL) are over-represented in new entries to the traditional schools at 45.8% compared to the charter schools at 30.6%.
- Students classified as Current-ELL are, however, under-represented in transfers to the traditional schools, 11.7% compared to the charter schools at 15.1%.

- Special Education status

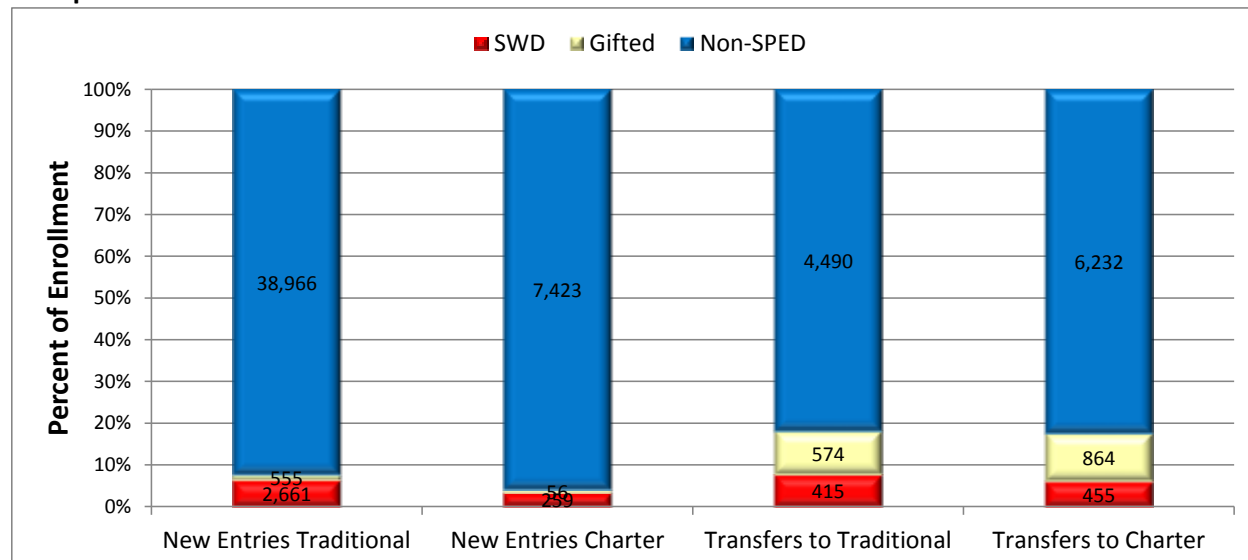
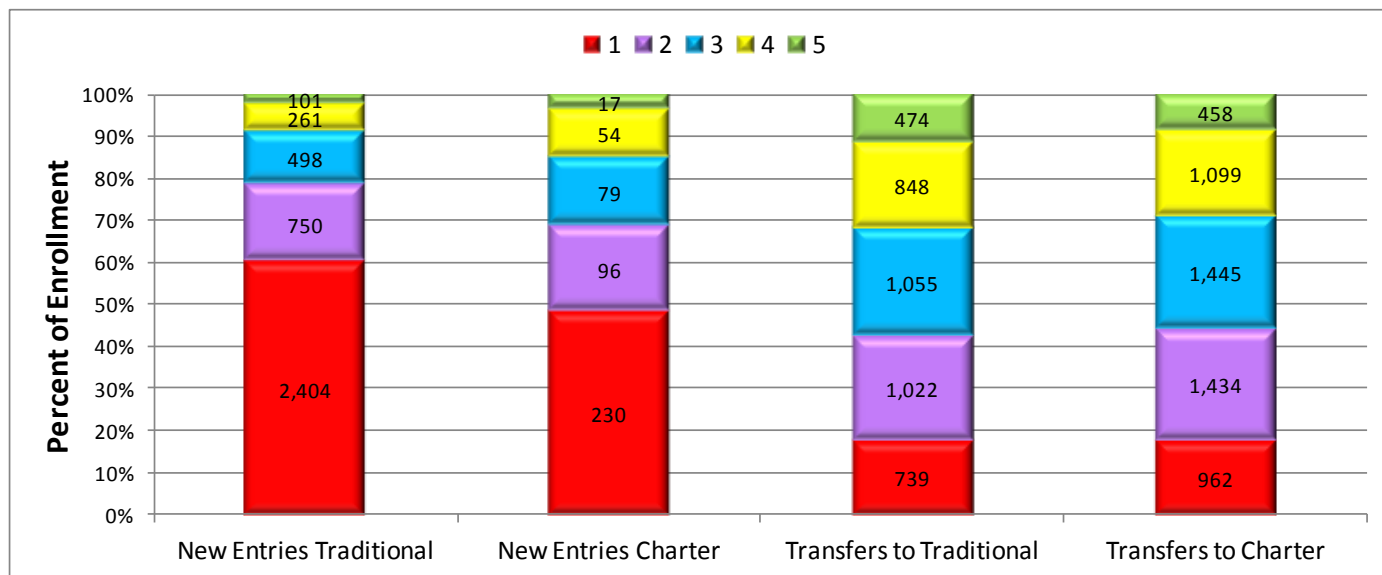


Figure 6. Movement type by Special Education (SPED) status

- Students with Disabilities are over-represented in new entries into the traditional schools at 6.3% compared to the charter schools at 3.8%.
- Similar percentages of gifted students transfer to the charter schools, 11.4%, than to the traditional schools, 10.5%.

## 6. How do the movement categories break down by the achievement levels on the FSA/EOC?

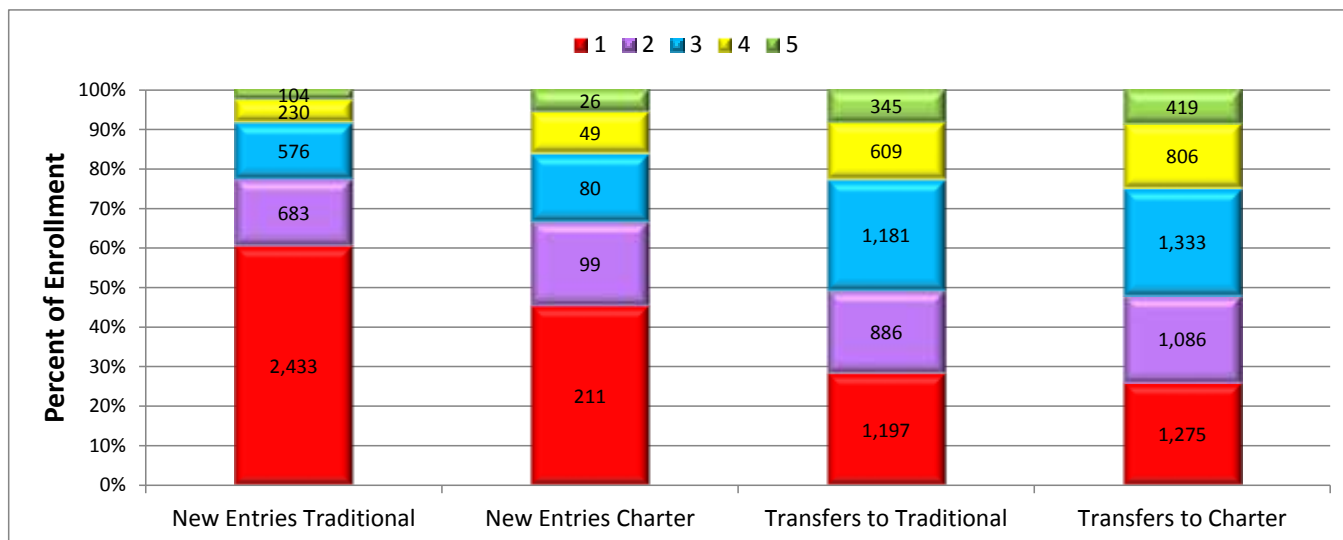
- Reading



**Figure 7. Movement type by 2015 FSA/ELA reading achievement level**

- Students who score at level 1 are over-represented in new entries to the traditional schools, 59.9%, compared to the charter schools, 48.3%.
- Similar percentages of students who score at each achievement level are represented in transfers to the charter and the traditional schools.

- Mathematics



**Figure 8. Movement type by 2015 FSA Mathematics/Algebra 1, 2 EOC/Geometry EOC achievement level**

- Students who score at level 1 are over-represented in new entries to the traditional schools, 60.4%, compared to the charter schools, 45.1%.
- Students who score at levels 4 and 5 are under-represented in new entries to the traditional schools, 8.3%, compared to the charter schools, 16.1%.

## 7. How does enrollment at the traditional and charter schools differ by neighborhood?

Figure 9 disaggregates the October 2015 student enrollment according to zip codes with greater than 50 students. Districtwide numbers are provided by the topmost bar. Figure 10 is a map, which provides the geographic boundaries of these zip codes.

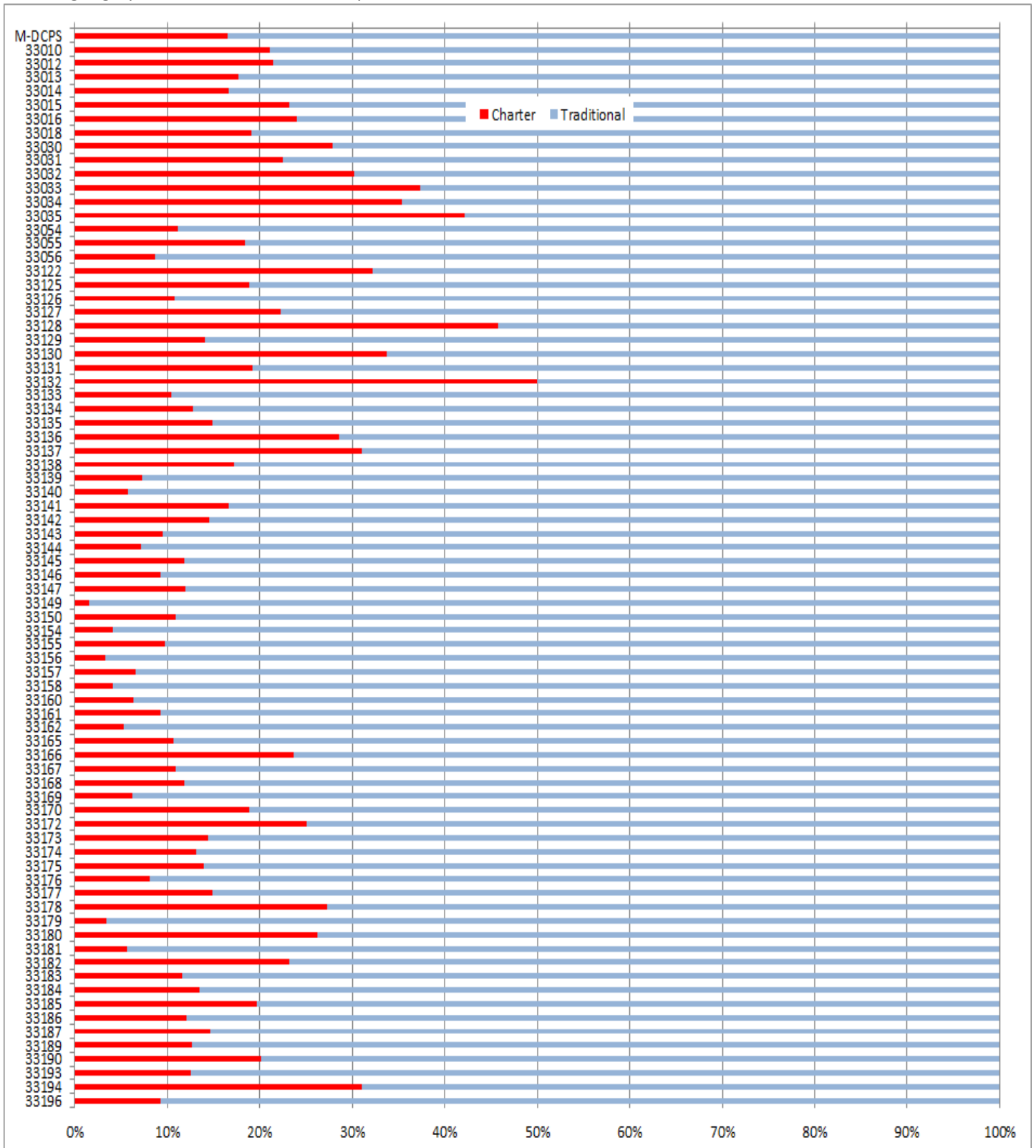


Figure 9. Enrollment at the Charter and Traditional Schools by Zip Code.

# MIAMI-DADE COUNTY, FLORIDA ZIP CODE BOUNDARY

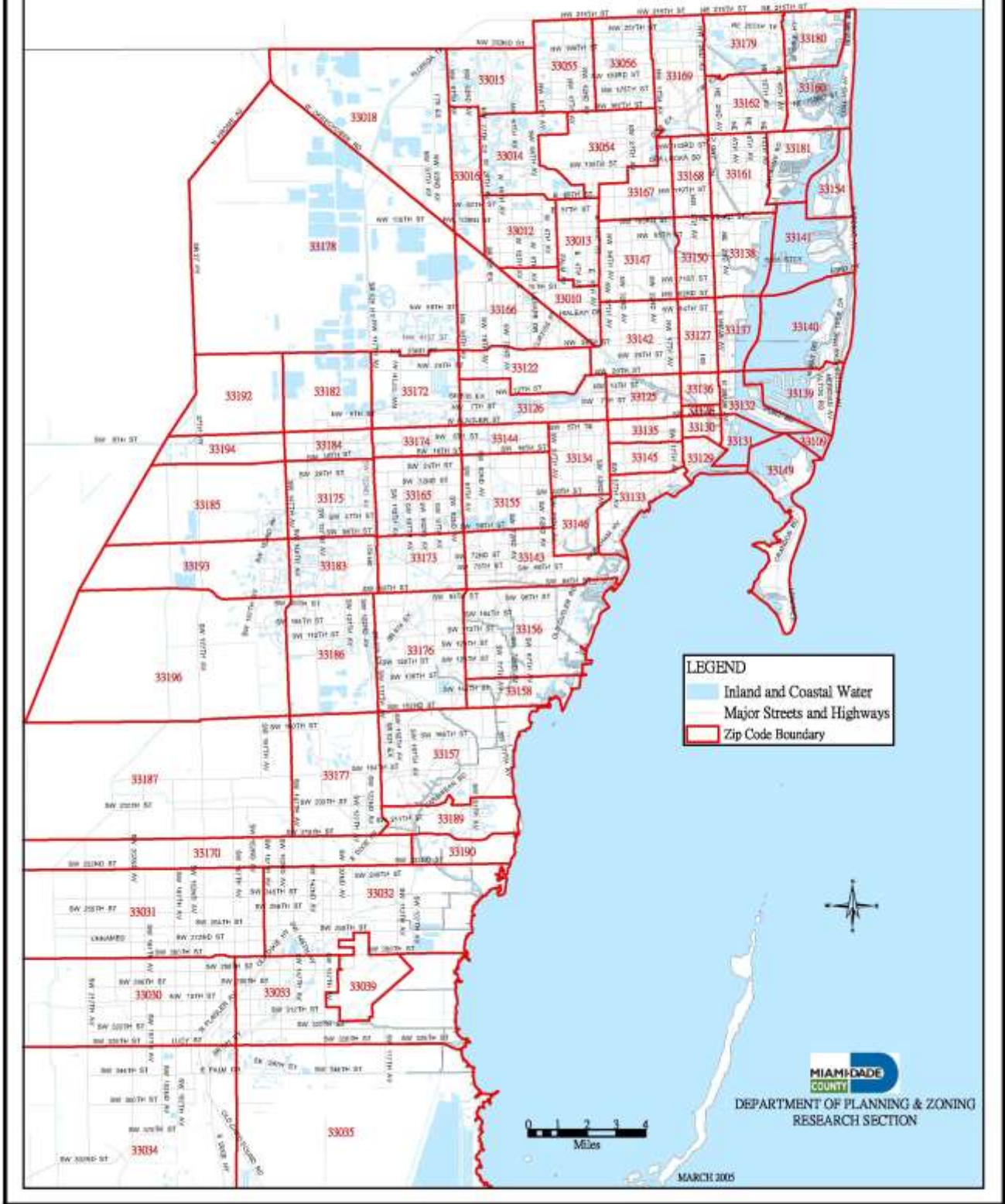


Figure 10. Map of Miami-Dade County subdivided into zip codes.



- The percentage of students who attend charter schools tends to cluster in neighborhoods, with the percentages varying considerably across the county.
- The percentage of students who attend charter schools in portions of Little Havana (33128) and Overtown (33132) is around three times the district average of 16.6%.
- The percentage of students who attend charter schools in portions of Homestead (33032-33034), Florida City (33035), Bayshore/Morningside (33137), and western Miami-Dade (33194) is around twice the district average.

## 8. To what extent did students transfer among the traditional and charter schools, from the 2014-15 to the 2015-16 school years?

For each governance structure, Table 1 lists the total student membership followed by the number and percent of students within the each governance structure who transfer within and between the structures during each month of the 2014-15 school year and the summer of 2015. For example, In August, 692 of the 286,727 students enrolled in the traditional schools (0.24%), transferred to the charter schools and 5,041 (1.8%) transferred to other traditional schools. The percentages are depicted graphically in Figure 11.

**Table 1. Monthly Transfers Among Charter and Traditional Schools in the M-DCPS, 2014-15**

Month	Student Membership	Traditional Schools				Charter Schools				
		Traditional to Charter		Traditional to Traditional		Charter to Traditional		Charter to Charter		
		n	%	n	%	n	%	n	%	
August	286,727	692	0.24	5,041	1.76	52,792	473	0.90	227	0.43
September	301,612	539	0.18	2,827	0.94	54,868	382	0.70	188	0.34
October	302,893	436	0.14	2,809	0.93	55,200	582	1.05	215	0.39
November	302,997	254	0.08	2,246	0.74	54,872	235	0.43	72	0.13
December	302,934	219	0.07	1,595	0.53	54,676	190	0.35	57	0.10
January	302,051	556	0.18	2,917	0.97	54,475	314	0.58	153	0.28
February	302,648	324	0.11	1,960	0.65	54,636	225	0.41	95	0.17
March	302,294	138	0.05	1,554	0.51	54,573	128	0.23	26	0.05
April	302,150	153	0.05	1,269	0.42	54,333	93	0.17	23	0.04
May	302,082	69	0.02	532	0.18	54,226	56	0.10	11	0.02
June	301,582	6	0.00	51	0.02	54,145	4	0.01	4	0.01
Total	320,737	3,386	1.06	22,801	7.11	59,022	2,682	4.54	1,071	1.81
Summer	277,121	5,849	2.11	46,543	16.80	51,495	3,914	7.60	5,958	11.57

*Note.* Summer transfers include all student entries into different schools, regardless of grade. Senior high school graduates are included in student membership.

- Transfers between governance structures mostly occur during the summer.
- Transfers during the regular school year are highest in August and decline thereafter, regardless of type, except for a brief spike in January and February. The additional spike seen in October was due to the closure of a charter elementary school.
- Transfers from traditional to charter schools represent the lowest percentage of student membership, while transfers among the traditional schools nearly always represent the highest percentage of student membership, of the four movement categories.
- Student movement from traditional to charter schools is greater in number, but much less proportionally, than student movement from the charter to the traditional schools.

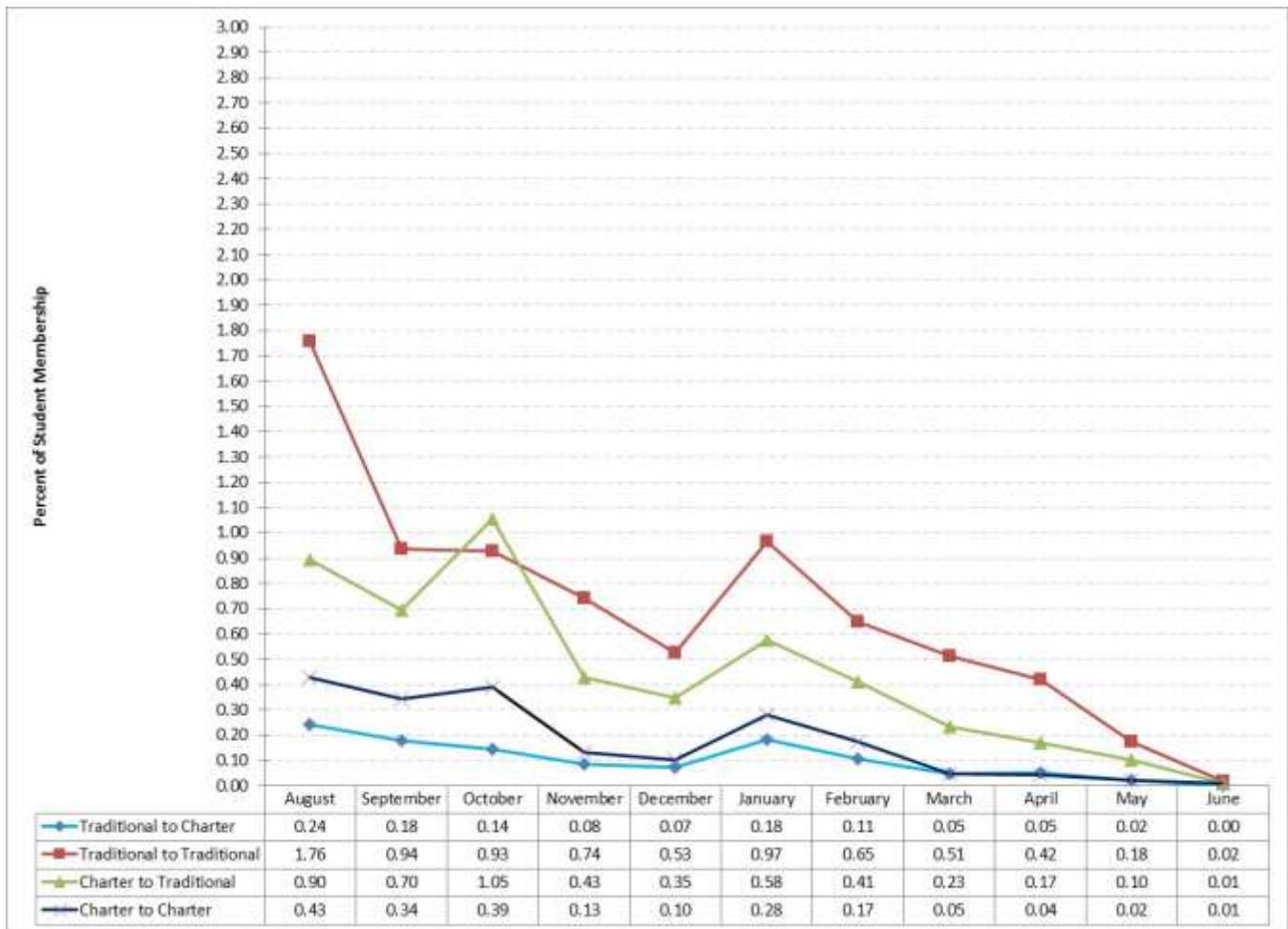


Figure 11. Monthly transfers among charter and traditional schools

## 9. What percentage of enrollment do traditional schools lose to charter schools on a cumulative basis?

Estimates of the **cumulative** student enrollment **lost** to the charter schools were based on the assumption that students would have otherwise attended the residence schools to which they were assigned based on established school attendance boundaries if they had not attended a charter school. Students included in this total may have transferred to charter schools at any time during the academic career or may never have attended a traditional school. Appendix Table A provides a snapshot that lists the number and percent of students attending each traditional school, those in the attendance zone who attended any charter school, and the total of the two, during October of the 2014-15 and 2015-16 school years. School wide magnet schools and schools without a resident population are excluded. Schools with the highest enrollment loss to charter schools (25th percentile) relative to the total within their grade organization are highlighted.

- As of October of 2015-16, traditional middle schools lost the highest cumulative percentage of students (25.3%) to the charter schools, followed by K-8 centers (15.0%), senior high schools (14.3%), and elementary schools (13.5%).
- Cumulative enrollment loss from all grade organizations increased relative to the previous year (October 2014), with cumulative enrollment declining by 7.1% at the elementary schools, 5.8% at the middle schools, 5.3% at the senior high schools, and 2.4% at the middle schools.
- Knowledge of a traditional schools' demographic characteristics allows one to predict 50.2% of the variance in the percentage enrollment lost to the charter schools.

- More loss is predicted for middle schools, schools with a higher percentage of students who are Hispanic and schools with a higher percentage of students who are overage for grade.
- Less loss is predicted for schools with a higher percentages of students who are Former English Language Learners.

## **10. What are the primary conclusions of this report?**

More than one in six students in the District currently attends a charter school, a proportion that has steadily increased since charter schools were first introduced. The exchange of students between the traditional and charter schools, when added to the new entries that go directly to charter schools, has increased the percentage of disadvantaged students, decreased the academic achievement, and decreased enrollment at the District's traditional schools. The loss has tended to cluster in specific neighborhoods and is most pronounced in middle schools. Transfers between governance structures are highest in August and decline thereafter, except for a brief spike in January and February, regardless of type, with transfers from traditional to charter school representing the smallest proportion of the student membership.

## **References**

Urdegar, S.M. (2015, in progress). *Review of charter schools, 2014-15*. Miami, FL: Miami-Dade County Public Schools.

Miami International Airport (2005). *Miami-Dade County zip code map*. Retrieved October 22, 2013 from <http://www.miami-airport.com/pdfdoc/zip-codes.pdf>

**Table 2. Actual Enrollment at Traditional Schools and Projected Enrollment Lost to Charter Schools, 2014-15 to 2015-16**

Location	School	2014-15					2015-16				
		Traditional		Charter		Total	Traditional		Charter		Total
		n	%	n	%		n	%	n	%	
<b>ELEMENTARY SCHOOLS</b>											
0041	AIR BASE K-8 CENTER	933	100.0	0	0.0	933	1,051	100.0	0	0.0	1,051
0081	LENORA BRAYNON SMITH	408	85.5	69	14.5	477	405	84.9	72	15.1	477
0101	ARCOLA LAKE EL	506	91.8	45	8.2	551	546	91.9	48	8.1	594
0111	MAYA ANGELOU EL	759	91.4	71	8.6	830	759	91.6	70	8.4	829
0121	AUBURNDALE EL	864	94.1	54	5.9	918	878	93.7	59	6.3	937
0125	NORMA BUTLER BOSSARD E	1,225	91.3	116	8.7	1,341	1,180	87.7	166	12.3	1,346
<b>0161</b>	<b>AVOCADO EL</b>	<b>465</b>	<b>69.6</b>	<b>203</b>	<b>30.4</b>	<b>668</b>	<b>417</b>	<b>56.2</b>	<b>325</b>	<b>43.8</b>	<b>742</b>
0201	BANYAN EL	378	95.2	19	4.8	397	365	93.4	26	6.6	391
<b>0211</b>	<b>DR MANUEL C BARREIRO</b>	<b>793</b>	<b>78.8</b>	<b>213</b>	<b>21.2</b>	<b>1,006</b>	<b>791</b>	<b>78.9</b>	<b>212</b>	<b>21.1</b>	<b>1,003</b>
0251	ETHEL KOGER BECKHAM	838	94.9	45	5.1	883	817	94.8	45	5.2	862
0261	BEL-AIRE EL	418	86.2	67	13.8	485	406	85.5	69	14.5	475
0271	BENT TREE EL	528	84.1	100	15.9	628	522	83.3	105	16.7	627
<b>0311</b>	<b>GOULDS ELEMENTARY SCH</b>	<b>653</b>	<b>68.5</b>	<b>300</b>	<b>31.5</b>	<b>953</b>	<b>640</b>	<b>67.8</b>	<b>304</b>	<b>32.2</b>	<b>944</b>
0321	BISCAYNE EL	674	85.3	116	14.7	790	739	85.4	126	14.6	865
0331	CHAPMAN PRNERSHP NORTH	43	100.0	0	0.0	43	43	100.0	0	0.0	43
0341	ARCH CREEK ELEMENTARY	537	97.3	15	2.7	552	569	96.8	19	3.2	588
0351	CHAPMAN PRNERSHP SOUTH	77	100.0	0	0.0	77	88	100.0	0	0.0	88
0361	BISCAYNE GARDENS EL	655	92.8	51	7.2	706	600	94.5	35	5.5	635
0401	VAN E BLANTON EL	557	94.1	35	5.9	592	583	95.1	30	4.9	613
0461	BRENTWOOD EL	739	87.9	102	12.1	841	624	84.7	113	15.3	737
0481	JAMES H BRIGHT EL	694	91.9	61	8.1	755	633	89.7	73	10.3	706
0521	BROADMOOR EL	459	88.1	62	11.9	521	472	88.9	59	11.1	531
0561	WILLIAM J BRYAN EL	730	95.5	34	4.5	764	732	95.6	34	4.4	766
0641	BUNCHE PARK EL	356	97.0	11	3.0	367	379	96.7	13	3.3	392
<b>0661</b>	<b>CARIBBEAN K-8 CENTER</b>	<b>558</b>	<b>73.1</b>	<b>205</b>	<b>26.9</b>	<b>763</b>	<b>662</b>	<b>76.5</b>	<b>203</b>	<b>23.5</b>	<b>865</b>
0671	CALUSA EL	856	92.4	70	7.6	926	860	90.4	91	9.6	951
<b>0681</b>	<b>CAROL CITY EL</b>	<b>504</b>	<b>83.3</b>	<b>101</b>	<b>16.7</b>	<b>605</b>	<b>449</b>	<b>79.5</b>	<b>116</b>	<b>20.5</b>	<b>565</b>
0721	GEORGE W CARVER EL	442	74.4	152	25.6	594	391	83.0	80	17.0	471
<b>0771</b>	<b>WILLIAM A CHAPMAN</b>	<b>589</b>	<b>81.8</b>	<b>131</b>	<b>18.2</b>	<b>720</b>	<b>557</b>	<b>78.3</b>	<b>154</b>	<b>21.7</b>	<b>711</b>

Note. Schools highlighted had the greatest enrollment loss in their grade organization (top 25<sup>th</sup> percentile) during 2015. (table continues)

Table 2, continued

Location	School	2014-15					2015-16				
		Traditional		Charter		Total	Traditional		Charter		Total
		n	%	n	%		n	%	n	%	
0801	CITRUS GROVE EL	815	83.2	165	16.8	980	852	74.8	287	25.2	1,139
0831	CLAUDE PEPPER EL	686	82.8	143	17.2	829	602	75.9	191	24.1	793
0841	COCONUT GROVE EL	461	89.9	52	10.1	513	481	90.6	50	9.4	531
0861	COLONIAL DRIVE EL	295	88.3	39	11.7	334	298	87.9	41	12.1	339
0881	COMSTOCK EL	556	76.9	167	23.1	723	564	76.9	169	23.1	733
1001	CORAL PARK EL	1,162	94.9	62	5.1	1,224	1,192	94.3	72	5.7	1,264
1041	CORAL REEF EL	853	96.5	31	3.5	884	879	93.8	58	6.2	937
1081	CORAL TERRACE EL	464	92.2	39	7.8	503	461	91.7	42	8.3	503
1161	CRESTVIEW EL	438	97.1	13	2.9	451	422	96.8	14	3.2	436
1241	CUTLER RIDGE EL	701	94.0	45	6.0	746	602	92.5	49	7.5	651
1281	CYPRESS K-8 CENTER	273	86.4	43	13.6	316	306	87.9	42	12.1	348
1361	FREDERICK DOUGLASS EL	319	63.0	187	37.0	506	198	48.6	209	51.4	407
1371	MARJORY S DOUGLAS EL	989	83.9	190	16.1	1,179	993	82.2	215	17.8	1,208
1481	JOHN G DUPUIS EL	643	86.7	99	13.3	742	586	83.8	113	16.2	699
1521	AMELIA EARHART EL	478	93.9	31	6.1	509	461	93.9	30	6.1	491
1561	EARLINGTON HEIGHTS EL	458	100.0	0	0.0	458	467	85.5	79	14.5	546
1641	EMERSON EL	398	91.7	36	8.3	434	359	90.9	36	9.1	395
1691	CHRISTINA M EVE EL	731	91.1	71	8.9	802	800	89.8	91	10.2	891
1761	DAVID FAIRCHILD EL	642	93.9	42	6.1	684	613	93.6	42	6.4	655
1801	FAIRLAWN EL	651	94.9	35	5.1	686	649	94.7	36	5.3	685
1811	DANTE B FASCELL EL	515	81.4	118	18.6	633	525	81.9	116	18.1	641
1841	FLAGAMI EL	436	95.6	20	4.4	456	441	97.1	13	2.9	454
1881	H M FLAGLER EL	795	95.4	38	4.6	833	774	94.6	44	5.4	818
1921	FLAMINGO EL	668	92.9	51	7.1	719	647	92.3	54	7.7	701
2001	FLORIDA CITY EL	785	66.4	398	33.6	1,183	802	64.2	447	35.8	1,249
2021	GLORIA FLOYD EL	617	78.0	174	22.0	791	574	71.9	224	28.1	798
2081	FULFORD EL	526	97.2	15	2.8	541	551	97.5	14	2.5	565
2111	HIALEAH GARDENS	929	85.2	161	14.8	1,090	917	86.7	141	13.3	1,058
2151	JACK D GORDON EL	1,121	93.2	82	6.8	1,203	1,093	91.2	106	8.8	1,199
2161	GOLDEN GLADES EL	242	93.1	18	6.9	260	253	93.4	18	6.6	271
2181	JOELLA GOOD ELEMENTARY	955	89.2	116	10.8	1,071	942	89.5	110	10.5	1,052

Note. Schools highlighted had the greatest enrollment loss in their grade organization (top 25<sup>th</sup> percentile) during 2015.

(table continues)

Table 2, continued

Location	School	2014-15					2015-16				
		Traditional		Charter		Total	Traditional		Charter		Total
		n	%	n	%		n	%	n	%	
2191	SPANISH LAKE ELEMENTARY	1,668	85.7	278	14.3	1,946	1,642	86.1	265	13.9	1,907
2241	GRATIGNY ELEM	682	92.9	52	7.1	734	590	88.6	76	11.4	666
2261	GREENGLADE ELEM	519	64.4	287	35.6	806	542	66.6	272	33.4	814
2281	GREYNOLDS PARK EL	767	99.6	3	0.4	770	750	98.9	8	1.1	758
2321	GULFSTREAM EL	703	94.6	40	5.4	743	708	94.5	41	5.5	749
2331	CHARLES R HADLEY EL	983	88.9	123	11.1	1,106	972	88.5	126	11.5	1,098
2341	JOE HALL ELEMENTARY	574	73.1	211	26.9	785	572	72.7	215	27.3	787
2351	ENEIDA MASSAS HARTNER	543	75.3	178	24.7	721	498	74.4	171	25.6	669
2361	HIALEAH EL	636	86.8	97	13.2	733	635	85.7	106	14.3	741
2371	WEST HIALEAH GARDENS E	1,216	84.6	222	15.4	1,438	1,268	84.8	228	15.2	1,496
2401	HIBISCUS EL	505	98.2	9	1.8	514	543	97.7	13	2.3	556
2441	V BOONE/HIGHLAND OAKS	730	98.5	11	1.5	741	718	98.5	11	1.5	729
2501	HOLMES ELEMENTARY	543	91.0	54	9.0	597	544	90.7	56	9.3	600
2511	ZORA NEALE HURSTON EL	762	63.5	438	36.5	1,200	711	62.5	427	37.5	1,138
2521	OLIVER HOOVER EL	770	85.4	132	14.6	902	738	82.4	158	17.6	896
2541	HOWARD DRIVE EL	637	96.8	21	3.2	658	640	97.0	20	3.0	660
2581	MADIE IVES ELEMENTARY	703	98.6	10	1.4	713	694	97.9	15	2.1	709
2641	KENDALE EL	546	92.5	44	7.5	590	560	92.0	49	8.0	609
2651	KENDALE LAKES EL	765	87.1	113	12.9	878	777	87.2	114	12.8	891
2661	KENSINGTON PARK EL	1,162	93.6	79	6.4	1,241	1,083	91.8	97	8.2	1,180
2781	KINLOCH PARK EL	750	95.7	34	4.3	784	709	94.2	44	5.8	753
2801	LAKE STEVENS EL	284	77.6	82	22.4	366	261	77.2	77	22.8	338
2821	LAKEVIEW EL	441	96.5	16	3.5	457	422	97.2	12	2.8	434
2891	WILLIAM H LEHMAN	698	84.4	129	15.6	827	653	82.8	136	17.2	789
2941	LAURA C SAUNDERS	665	66.5	335	33.5	1,000	691	64.6	379	35.4	1,070
2981	LIBERTY CITY EL	432	88.2	58	11.8	490	471	90.2	51	9.8	522
3021	JESSE J MCCRARY, JR	643	90.3	69	9.7	712	650	91.4	61	8.6	711
3041	LORAH PARK EL	480	87.8	67	12.2	547	484	87.8	67	12.2	551
3051	TOUSSAINT L'OUVERTURE	434	83.6	85	16.4	519	463	80.5	112	19.5	575
3061	LUDLAM EL	401	85.7	67	14.3	468	384	86.5	60	13.5	444
3111	WESLEY MATTHEWS EL	523	95.4	25	4.6	548	499	94.0	32	6.0	531

Note. Schools highlighted had the greatest enrollment loss in their grade organization (top 25<sup>th</sup> percentile) during 2015.

(table continues)

Table 2, continued

Location	School	2014-15					2015-16				
		Traditional		Charter		Total	Traditional		Charter		Total
		n	%	n	%		n	%	n	%	
3141	MEADOWLANE EL	925	84.6	169	15.4	1,094	898	84.1	170	15.9	1,068
3181	MELROSE EL	743	81.3	171	18.7	914	685	86.1	111	13.9	796
3241	MIAMI GARDENS EL	288	89.4	34	10.6	322	284	87.9	39	12.1	323
<b>3261</b>	<b>MIAMI HEIGHTS EL</b>	<b>1,081</b>	<b>75.0</b>	<b>361</b>	<b>25.0</b>	<b>1,442</b>	<b>1,122</b>	<b>74.3</b>	<b>389</b>	<b>25.7</b>	<b>1,511</b>
3301	MIAMI PARK EL	351	86.9	53	13.1	404	307	87.0	46	13.0	353
3341	MIAMI SHORES EL	799	95.0	42	5.0	841	769	94.9	41	5.1	810
<b>3381</b>	<b>MIAMI SPRINGS EL</b>	<b>457</b>	<b>85.4</b>	<b>78</b>	<b>14.6</b>	<b>535</b>	<b>418</b>	<b>80.7</b>	<b>100</b>	<b>19.3</b>	<b>518</b>
3431	PHYLLIS R MILLER EL	686	97.3	19	2.7	705	650	96.9	21	3.1	671
3541	ROBERT RUSSA MOTON EL	359	98.4	6	1.6	365	383	98.5	6	1.5	389
3661	NATURAL BRIDGE EL	682	98.0	14	2.0	696	744	98.0	15	2.0	759
3701	NORLAND EL	651	92.1	56	7.9	707	675	91.1	66	8.9	741
3741	NORTH BEACH EL	1,068	98.3	18	1.7	1,086	1,070	97.8	24	2.2	1,094
3781	BARBARA J. HAWKINS EL	335	91.3	32	8.7	367	291	89.0	36	11.0	327
<b>3861</b>	<b>NORTH GLADE EL</b>	<b>352</b>	<b>78.7</b>	<b>95</b>	<b>21.3</b>	<b>447</b>	<b>321</b>	<b>77.7</b>	<b>92</b>	<b>22.3</b>	<b>413</b>
3901	NORTH HIALEAH EL	551	88.4	72	11.6	623	539	89.8	61	10.2	600
3941	NORTH MIAMI EL	556	97.7	13	2.3	569	527	98.3	9	1.7	536
3981	NORTH TWIN LAKES EL	534	92.5	43	7.5	577	531	92.3	44	7.7	575
4001	NORWOOD EL	541	99.3	4	0.7	545	547	98.6	8	1.4	555
4021	OAK GROVE EL	620	95.2	31	4.8	651	578	94.8	32	5.2	610
4061	OJUS EL	889	98.3	15	1.7	904	933	98.3	16	1.7	949
4071	OLINDA EL	428	92.2	36	7.8	464	424	92.0	37	8.0	461
4081	M_DCPS PRIMARY LEARNING	401	100.0	0	0.0	401	--	--	--	--	--
4091	OLYMPIA HEIGHTS EL	526	90.8	53	9.2	579	532	89.1	65	10.9	597
4121	DR ROBERT B INGRAM	389	81.7	87	18.3	476	438	89.4	52	10.6	490
4171	ORCHARD VILLA EL	418	89.3	50	10.7	468	433	89.6	50	10.4	483
4221	PALMETTO EL	642	97.7	15	2.3	657	617	97.3	17	2.7	634
4241	PALM LAKES EL	755	86.0	123	14.0	878	720	86.3	114	13.7	834
4261	PALM SPRINGS EL	678	92.0	59	8.0	737	635	90.7	65	9.3	700
<b>4281</b>	<b>PALM SPRINGS NORTH EL</b>	<b>1,021</b>	<b>78.5</b>	<b>280</b>	<b>21.5</b>	<b>1,301</b>	<b>1,038</b>	<b>79.0</b>	<b>276</b>	<b>21.0</b>	<b>1,314</b>
4301	PARKVIEW EL	341	97.4	9	2.6	350	332	96.0	14	4.0	346
4341	PARKWAY EL	368	93.6	25	6.4	393	344	94.5	20	5.5	364

Note. Schools highlighted had the greatest enrollment loss in their grade organization (top 25<sup>th</sup> percentile) during 2015.

(table continues)

Table 2, continued

Location	School	2014-15					2015-16				
		Traditional		Charter		Total	Traditional		Charter		Total
		n	%	n	%		n	%	n	%	
4381	PERRINE ELEMENTARY	757	95.3	37	4.7	794	774	93.3	56	6.7	830
4401	KELSEY L PHARR EL	296	83.4	59	16.6	355	320	82.7	67	17.3	387
4421	PINECREST EL	1,042	98.9	12	1.1	1,054	1,032	98.8	13	1.2	1,045
4441	PINE LAKE EL	363	84.8	65	15.2	428	408	83.3	82	16.7	490
4461	PINE VILLA EL	386	78.5	106	21.5	492	424	78.5	116	21.5	540
4491	HENRY E S REEVES EL	741	93.8	49	6.2	790	691	93.3	50	6.7	741
4501	POINCIANA PARK EL	437	96.9	14	3.1	451	409	96.5	15	3.5	424
4511	DR GILBERT L PORTER	803	87.8	112	12.2	915	755	82.4	161	17.6	916
4541	RAINBOW PARK EL	404	90.2	44	9.8	448	410	93.0	31	7.0	441
4581	REDLAND EL	849	74.7	287	25.3	1,136	847	74.3	293	25.7	1,140
4611	REDONDO EL	685	80.6	165	19.4	850	643	72.6	243	27.4	886
4651	E F BECKFORD/RICHMOND	247	95.7	11	4.3	258	103	98.1	2	1.9	105
4681	RIVERSIDE EL	1,370	60.6	891	39.4	2,261	1,295	62.0	795	38.0	2,090
4721	ROCKWAY EL	416	89.1	51	10.9	467	418	87.8	58	12.2	476
4741	ROYAL GREEN EL	556	79.5	143	20.5	699	586	82.4	125	17.6	711
4761	ROYAL PALM EL	571	93.0	43	7.0	614	583	92.1	50	7.9	633
4801	G K EDELMAN/SABAL PALM	701	98.5	11	1.5	712	690	98.2	13	1.8	703
4841	SANTA CLARA EL	597	79.4	155	20.6	752	597	80.9	141	19.1	738
4881	SCOTT LAKE EL	514	97.2	15	2.8	529	482	97.8	11	2.2	493
4921	SEMINOLE EL	596	84.7	108	15.3	704	580	86.6	90	13.4	670
4961	SHADOWLAWN EL	330	87.1	49	12.9	379	255	82.5	54	17.5	309
5001	SHENANDOAH EL	999	88.6	129	11.4	1,128	1,014	88.3	134	11.7	1,148
5021	BEN SHEPPARD EL	1,000	87.6	141	12.4	1,141	1,002	88.1	135	11.9	1,137
5041	SILVER BLUFF ELEMENTARY	577	89.6	67	10.4	644	581	88.7	74	11.3	655
5061	DR. CARLOS J. FINLAY	536	93.4	38	6.6	574	548	93.0	41	7.0	589
5081	DR. FREDERICA S. WILSON	373	88.6	48	11.4	421	357	88.8	45	11.2	402
5091	SOUTH POINTE ELEMENTARY	573	98.8	7	1.2	580	582	99.1	5	0.9	587
5121	SNAPPER CREEK EL	520	88.9	65	11.1	585	495	86.4	78	13.6	573
5131	N. DADE CNTR MOD LANG	396	100.0	0	0.0	396	384	100.0	0	0.0	384
5201	SOUTH HIALEAH EL	1,131	92.6	91	7.4	1,222	1,068	92.4	88	7.6	1,156
5281	SOUTH MIAMI HEIGHTS EL	685	82.3	147	17.7	832	688	82.4	147	17.6	835

Note. Schools highlighted had the greatest enrollment loss in their grade organization (top 25<sup>th</sup> percentile) during 2015.

(table continues)



**Table 2, continued**

Location	School	2014-15					2015-16				
		Traditional		Charter		Total	Traditional		Charter		Total
		n	%	n	%		n	%	n	%	
5321	SOUTHSIDE EL	837	94.7	47	5.3	884	770	94.0	49	6.0	819
5361	SPRINGVIEW EL	438	81.7	98	18.3	536	467	81.6	105	18.4	572
5381	E. W. F. STIRRUP EL	910	82.0	200	18.0	1,110	955	82.5	203	17.5	1,158
5401	SUNSET EL	1,177	100.0	0	0.0	1,177	1,183	99.5	6	0.5	1,189
5421	SUNSET PARK EL	645	84.1	122	15.9	767	654	81.1	152	18.9	806
5431	SWEETWATER EL	793	90.0	88	10.0	881	736	88.5	96	11.5	832
5441	SYLVANIA HEIGHTS EL	466	91.7	42	8.3	508	466	89.4	55	10.6	521
5481	TREASURE ISLAND EL	631	83.7	123	16.3	754	560	79.1	148	20.9	708
5521	TROPICAL EL	442	86.2	71	13.8	513	413	83.3	83	16.7	496
5561	FRANCES S. TUCKER EL	411	82.9	85	17.1	496	402	81.9	89	18.1	491
5601	TWIN LAKES EL	540	89.0	67	11.0	607	487	87.3	71	12.7	558
5641	VILLAGE GREEN EL	347	87.4	50	12.6	397	346	87.8	48	12.2	394
5711	MAE M. WALTERS EL	584	89.4	69	10.6	653	563	88.9	70	11.1	633
5831	HENRY S. WEST LAB.	311	100.0	0	0.0	311	314	100.0	0	0.0	314
5931	PHILLIS WHEATLEY EL	282	61.8	174	38.2	456	249	54.0	212	46.0	461
5951	WHISPERING PINES EL	644	95.7	29	4.3	673	637	94.0	41	6.0	678
5971	NATHAN B. YOUNG EL	388	92.4	32	7.6	420	385	96.5	14	3.5	399
5981	DR. EDWARD L. WHIGHAM	860	75.4	281	24.6	1,141	870	74.6	296	25.4	1,166
5991	CHARLES D. WYCHE, JR.	714	82.6	150	17.4	864	755	84.8	135	15.2	890
9991	M-DCPS ELEMENTARY SCHOOLS	107,311	87.4	15,449	12.6	122,760	105,352	86.5	16,421	13.5	121,773
<b>K-8 CENTERS</b>											
0071	EUGENIA B THOMAS K-8 C	1,627	83.7	318	16.3	1,945	1,709	82.8	354	17.2	2,063
0073	MANDARIN LAKES K-8 ACAD	1,089	44.0	1,385	56.0	2,474	1,023	41.3	1,453	58.7	2,476
0091	BOB GRAHAM ED CENTER	1,749	91.7	158	8.3	1,907	1,773	90.6	185	9.4	1,958
0092	NORMAN S EDELCEP K-8	1,988	99.6	8	0.4	1,996	2,136	99.8	5	0.2	2,141
0122	DR ROLANDO ESPINOSA	1,681	81.0	395	19.0	2,076	1,695	78.7	458	21.3	2,153
0231	AVENTURA WATERWAYS PREP	1,980	75.1	655	24.9	2,635	1,994	75.1	661	24.9	2,655
0241	RK BROAD/BAY HARBOR	1,336	98.1	26	1.9	1,362	1,324	97.9	28	2.1	1,352
0441	BLUE LAKES K-8	491	90.1	54	9.9	545	489	91.2	47	8.8	536
0451	BOWMAN ASHE/DOOLIN K-8	1,205	83.9	232	16.1	1,437	1,109	83.3	222	16.7	1,331
0651	CAMPBELL DRIVE K-8 CEN	866	63.0	508	37.0	1,374	927	64.4	513	35.6	1,440

Note. Schools highlighted had the greatest enrollment loss in their grade organization (top 25<sup>th</sup> percentile) during 2015. (table continues)

Table 2, continued

Location	School	2014-15					2015-16				
		Traditional		Charter		Total	Traditional		Charter		Total
		n	%	n	%		n	%	n	%	
0761	FIENBERG/FISHER K-8	859	97.0	27	3.0	886	851	96.9	27	3.1	878
0961	CORAL GABLES PREP ACAD	717	100.0	0	0.0	717	818	94.2	50	5.8	868
1121	CORAL WAY K-8 CENTER	1,471	93.1	109	6.9	1,580	1,460	94.0	93	6.0	1,553
1331	DEVON AIRE K-8 CENTER	1,586	95.9	68	4.1	1,654	1,524	93.9	99	6.1	1,623
1401	CHARLES R DREW EL	448	97.0	14	3.0	462	462	96.9	15	3.1	477
<b>1441</b>	<b>PAUL LAURENCE DUNBAR E</b>	<b>375</b>	<b>54.3</b>	<b>315</b>	<b>45.7</b>	<b>690</b>	<b>395</b>	<b>54.9</b>	<b>325</b>	<b>45.1</b>	<b>720</b>
1601	EDISON PARK EL	487	92.1	42	7.9	529	458	92.7	36	7.3	494
1681	LILLIE C EVANS K-8 CEN	455	94.4	27	5.6	482	444	93.1	33	6.9	477
1721	EVERGLADES K-8 CENTER	1,114	96.1	45	3.9	1,159	1,048	95.4	51	4.6	1,099
2041	BEN FRANKLIN K-8 CENTER	577	95.8	25	4.2	602	581	94.2	36	5.8	617
2701	KENWOOD K-8 CENTER	1,041	92.5	84	7.5	1,125	1,067	95.0	56	5.0	1,123
2741	KEY BISCAYNE K-8 CNTR	1,447	99.4	9	0.6	1,456	1,381	99.1	12	0.9	1,393
2881	LEEWOOD K-8 CENTER	811	96.2	32	3.8	843	813	94.9	44	5.1	857
2901	LEISURE CITY K-8 CNTR	1,045	88.0	142	12.0	1,187	1,059	87.7	148	12.3	1,207
2911	LINDA LENTIN K-8 CNTR	936	97.0	29	3.0	965	880	97.2	25	2.8	905
3101	FRANK C MARTIN K-8 CN	1,173	100.0	0	0.0	1,173	1,150	100.0	0	0.0	1,150
3191	ADA MERRITT K-8	727	100.0	0	0.0	727	731	100.0	0	0.0	731
3281	MIAMI LAKES K-8 CENTER	1,384	97.0	43	3.0	1,427	1,363	96.5	49	3.5	1,412
3421	MARCUS A MILAM K-8 CN	913	89.9	103	10.1	1,016	917	88.5	119	11.5	1,036
3501	MORNINGSIDE EL	531	93.7	36	6.3	567	509	93.4	36	6.6	545
3581	MYRTLE GROVE EL	642	95.0	34	5.0	676	640	96.2	25	3.8	665
<b>3621</b>	<b>COCONUT PALM K-8 ACAD</b>	<b>1,415</b>	<b>61.3</b>	<b>893</b>	<b>38.7</b>	<b>2,308</b>	<b>1,496</b>	<b>68.8</b>	<b>680</b>	<b>31.3</b>	<b>2,176</b>
3821	NORTH COUNTY K8 CENTER	442	94.0	28	6.0	470	457	94.2	28	5.8	485
<b>4031</b>	<b>GATEWAY ENV K-8 LEARN</b>	<b>1,850</b>	<b>64.0</b>	<b>1,040</b>	<b>36.0</b>	<b>2,890</b>	<b>1,874</b>	<b>62.9</b>	<b>1,107</b>	<b>37.1</b>	<b>2,981</b>
4391	IRVING & BEATR PESKOE	796	87.2	117	12.8	913	851	88.3	113	11.7	964
4691	JANE S ROBERTS K-8 CN	861	87.9	118	12.1	979	858	84.4	158	15.6	1,016
5005	DAVID LAWRENCE JR. K-8	1,693	97.6	42	2.4	1,735	1,655	98.3	29	1.7	1,684
5051	ERNEST R GRAHAM K-8 AC	1,459	87.6	207	12.4	1,666	1,417	87.2	208	12.8	1,625
<b>5101</b>	<b>JOHN I SMITH K-8 CENTER</b>	<b>1,592</b>	<b>81.8</b>	<b>355</b>	<b>18.2</b>	<b>1,947</b>	<b>1,614</b>	<b>78.6</b>	<b>440</b>	<b>21.4</b>	<b>2,054</b>
5141	HUBERT O. SIBLEY K-8	836	96.8	28	3.2	864	834	95.8	37	4.2	871
5241	SOUTH MIAMI K-8 CENTER	847	93.3	61	6.7	908	853	92.5	69	7.5	922

Note. Schools highlighted had the greatest enrollment loss in their grade organization (top 25<sup>th</sup> percentile) during 2015.

(table continues)

**Table 2, continued**

Location	School	2014-15					2015-16				
		Traditional		Charter		Total	Traditional		Charter		Total
		n	%	n	%		n	%	n	%	
5671	VINELAND K-8 CENTER	934	96.3	36	3.7	970	942	96.1	38	3.9	980
5791	WEST HOMESTEAD K-8 CNT	777	71.2	315	28.8	1,092	769	69.2	342	30.8	1,111
5861	DR. H. MACK/W. LITTLE	505	95.3	25	4.7	530	493	96.1	20	3.9	513
5901	CARRIE MEEK/WESTVIEW K8	707	93.1	52	6.9	759	741	96.2	29	3.8	770
5961	WINSTON PARK K-8 CENTER	1,334	92.3	111	7.7	1,445	1,372	92.6	110	7.4	1,482
9992	M-DCPS K-8 CENTERS	48,799	85.4	8,351	14.6	57,150	48,956	85.0	8,613	15.0	57,569
<b>MIDDLE SCHOOLS</b>											
5003	SOUTH DADE MIDDLE SCH	1,120	73.4	405	26.6	1,525	1,110	82.3	238	17.7	1,348
6001	HERBERT A. AMMONS MID.	1,211	100.0	0	0.0	1,211	1,216	100.0	0	0.0	1,216
6011	GEORGIA JONES-AYERS MID	512	59.1	355	40.9	867	454	57.3	339	42.7	793
6021	ARVIDA MIDDLE SCHOOL	1,370	94.1	86	5.9	1,456	1,404	93.5	98	6.5	1,502
6023	ANDOVER MIDDLE SCHOOL	784	91.8	70	8.2	854	708	91.1	69	8.9	777
6031	BROWNSVILLE MIDDLE SCH.	689	68.2	321	31.8	1,010	514	57.6	378	42.4	892
6041	PAUL W. BELL MIDDLE	437	75.2	144	24.8	581	501	70.9	206	29.1	707
6051	CAROL CITY MIDDLE SCH.	450	67.5	217	32.5	667	394	63.9	223	36.1	617
6071	GEORGE W. CARVER MID.	1,005	100.0	0	0.0	1,005	995	100.0	0	0.0	995
6091	CITRUS GROVE MIDDLE SCH	935	78.2	261	21.8	1,196	880	79.4	229	20.6	1,109
6111	CUTLER BAY MIDDLE	1,151	64.7	627	35.3	1,778	961	60.3	634	39.7	1,595
6121	RUBEN DARIO MIDDLE SCH	654	38.2	1,060	61.8	1,714	603	35.7	1,085	64.3	1,688
6161	LAWTON CHILES MIDDLE	670	60.5	437	39.5	1,107	840	67.4	407	32.6	1,247
6171	HENRY H. FILER MIDDLE	925	72.3	355	27.7	1,280	876	70.8	361	29.2	1,237
6211	GLADES MIDDLE SCHOOL	1,111	89.1	136	10.9	1,247	1,035	86.9	156	13.1	1,191
6221	HAMMOCKS MIDDLE SCHOOL	1,023	85.3	176	14.7	1,199	946	83.8	183	16.2	1,129
6231	HIALEAH MIDDLE SCHOOL	822	78.8	221	21.2	1,043	738	76.9	222	23.1	960
6241	HIGHLAND OAKS MIDDLE	1,176	75.6	380	24.4	1,556	1,119	74.2	390	25.8	1,509
6251	HOMESTEAD MIDDLE SCHOOL	757	39.0	1,182	61.0	1,939	682	34.5	1,295	65.5	1,977
6281	THOMAS JEFFERSON MID.	342	58.5	243	41.5	585	331	61.0	212	39.0	543
6301	JOHN F. KENNEDY MIDDLE	1,181	93.7	80	6.3	1,261	1,138	93.2	83	6.8	1,221
6331	KINLOCH PARK MIDDLE SCH	1,176	92.2	99	7.8	1,275	1,087	91.5	101	8.5	1,188
6351	LAKE STEVENS MIDDLE SCH	635	74.1	222	25.9	857	598	70.9	246	29.1	844
6361	JOSE DE DIEGO MIDDLE	629	42.8	840	57.2	1,469	651	42.7	873	57.3	1,524

Note. Schools highlighted had the greatest enrollment loss in their grade organization (top 25<sup>th</sup> percentile) during 2015. (table continues)

Table 2, continued

Location	School	2014-15					2015-16				
		Traditional		Charter		Total	Traditional		Charter		Total
		n	%	n	%		n	%	n	%	
6391	MADISON MIDDLE SCHOOL	517	66.7	258	33.3	775	479	65.3	254	34.7	733
6411	HORACE MANN MIDDLE SCH	740	66.7	370	33.3	1,110	732	67.2	358	32.8	1,090
6441	HOWARD D. MCMILLAN MID	915	79.4	237	20.6	1,152	889	81.1	207	18.9	1,096
6501	MIAMI LAKES MIDDLE SCH.	1,024	70.8	422	29.2	1,446	1,092	70.1	466	29.9	1,558
6521	MIAMI SPRINGS MIDDLE	1,316	68.6	602	31.4	1,918	1,201	63.7	683	36.3	1,884
6541	NAUTILUS MIDDLE SCHOOL	975	76.4	302	23.6	1,277	1,030	77.0	307	23.0	1,337
6571	NORLAND MIDDLE SCHOOL	922	94.1	58	5.9	980	899	93.4	64	6.6	963
6591	NORTH DADE MIDDLE SCH.	720	72.0	280	28.0	1,000	669	71.6	265	28.4	934
6611	COUNTRY CLUB MIDDLE SCH	914	64.2	509	35.8	1,423	757	56.2	589	43.8	1,346
6631	NORTH MIAMI MIDDLE SCH.	978	75.4	319	24.6	1,297	971	75.6	314	24.4	1,285
6681	PALM SPRINGS MIDDLE SCH	1,069	70.0	458	30.0	1,527	1,032	67.4	500	32.6	1,532
6701	PALMETTO MIDDLE SCHOOL	1,079	95.7	48	4.3	1,127	1,063	95.9	45	4.1	1,108
6741	PONCE DE LEON MIDDLE	1,157	87.3	169	12.7	1,326	1,195	87.1	177	12.9	1,372
6751	HIALEAH GARDENS MIDDLE	1,754	80.6	422	19.4	2,176	1,672	79.7	426	20.3	2,098
6761	REDLAND MIDDLE SCHOOL	484	48.3	518	51.7	1,002	480	36.5	836	63.5	1,316
6771	JORGE MAS CANOSA MIDDLE	1,913	90.9	191	9.1	2,104	1,915	89.2	231	10.8	2,146
6781	RICHMOND HEIGHTS MIDDLE	631	82.6	133	17.4	764	618	79.9	155	20.1	773
6801	RIVIERA MIDDLE SCHOOL	702	83.1	143	16.9	845	597	81.0	140	19.0	737
6821	ROCKWAY MIDDLE SCHOOL	989	84.5	182	15.5	1,171	1,011	84.5	186	15.5	1,197
6841	SHENANDOAH MIDDLE SCH.	1,164	84.4	215	15.6	1,379	1,177	84.0	224	16.0	1,401
6861	SOUTHWOOD MIDDLE SCHOOL	1,441	96.8	47	3.2	1,488	1,493	97.1	45	2.9	1,538
6881	SOUTH MIAMI MID. COMM.	943	93.7	63	6.3	1,006	943	92.8	73	7.2	1,016
6901	W. R. THOMAS MIDDLE	1,146	90.0	127	10.0	1,273	1,189	90.3	127	9.7	1,316
6921	LAMAR LOUISE CURRY MID.	1,075	81.6	243	18.4	1,318	1,109	83.6	218	16.4	1,327
6961	WEST MIAMI MIDDLE SCH.	852	76.7	259	23.3	1,111	792	77.6	229	22.4	1,021
9993	M-DCPS MIDDLE SCHOOLS	46,185	76.1	14,492	23.9	60,677	44,786	74.7	15,147	25.3	59,933
<b>SENIOR HIGH SCHOOLS</b>											
6081	CUTLER BAY SENIOR HIGH	370	98.1	7	1.9	377	471	99.2	4	0.8	475
7011	AMERICAN SENIOR HIGH	2,177	74.5	745	25.5	2,922	2,168	72.6	817	27.4	2,985
7029	TERRA ENV. RES. INSTITU	1,804	100.0	0	0.0	1,804	1,826	100.0	0	0.0	1,826
7031	MAST @ FIU BISCAYNE BAY	181	100.0	0	0.0	181	217	100.0	0	0.0	217

Note. Schools highlighted had the greatest enrollment loss in their grade organization (top 25<sup>th</sup> percentile) during 2015. (table continues)

Table 2, continued

Location	School	2014-15					2015-16				
		Traditional		Charter		Total	Traditional		Charter		Total
		n	%	n	%		n	%	n	%	
7033	LAW ENFORCEMENT OFFICER	379	100.0	0	0.0	379	348	100.0	0	0.0	348
7041	SCHOOL FOR ADV. ST.WOLF	116	100.0	0	0.0	116	112	100.0	0	0.0	112
7048	ALONZO & TRACY MOURNING	1,600	94.3	96	5.7	1,696	1,562	94.1	98	5.9	1,660
7049	WESTLAND HIALEAH SENIOR	2,113	86.6	328	13.4	2,441	2,053	84.6	373	15.4	2,426
7051	G. HOLMES BRADDOCK SR	3,570	87.5	511	12.5	4,081	3,563	87.6	503	12.4	4,066
7056	YOUNG MEN'S PREP. AC.	224	100.0	0	0.0	224	225	100.0	0	0.0	225
7061	SCHOOL FOR ADV. STUDY N	103	100.0	0	0.0	103	104	100.0	0	0.0	104
7071	CORAL GABLES SENIOR HI.	3,424	92.4	280	7.6	3,704	3,420	92.4	280	7.6	3,700
7081	DESIGN & ARCHITECTURE	520	100.0	0	0.0	520	511	100.0	0	0.0	511
7091	SCHOOL FOR ADV. STUDY S	237	100.0	0	0.0	237	224	100.0	0	0.0	224
7101	CORAL REEF SENIOR HIGH	3,213	100.0	0	0.0	3,213	3,365	100.0	0	0.0	3,365
7111	HIALEAH SENIOR HIGH SCH	2,780	83.0	568	17.0	3,348	2,542	79.4	661	20.6	3,203
7121	JOHN A. FERGUSON SENIOR	4,101	94.9	219	5.1	4,320	4,210	94.7	235	5.3	4,445
7131	HIALEAH-MIAMI LAKES SR.	1,713	69.7	744	30.3	2,457	1,695	68.5	781	31.5	2,476
7141	DR. MICHAEL M. KROP SR.	2,684	96.2	105	3.8	2,789	2,718	95.6	126	4.4	2,844
7151	HOMESTEAD SENIOR HIGH	1,776	44.4	2,224	55.6	4,000	1,837	42.4	2,493	57.6	4,330
7161	MAST ACADEMY	937	100.0	0	0.0	937	1,143	100.0	0	0.0	1,143
7171	MED ACAD FOR SCI & TECH	510	100.0	0	0.0	510	514	100.0	0	0.0	514
7191	HIALEAH GARDENS HIGH SC	3,084	80.4	751	19.6	3,835	3,125	80.4	761	19.6	3,886
7201	MIAMI BEACH SENIOR HIGH	2,379	94.0	153	6.0	2,532	2,432	92.9	185	7.1	2,617
7231	MIAMI CAROL CITY SENIOR	1,604	76.9	483	23.1	2,087	1,409	74.8	475	25.2	1,884
7241	RONALD W. REAGAN/DORAL	2,082	77.7	597	22.3	2,679	2,168	76.8	656	23.2	2,824
7251	MIAMI CENTRAL SENIOR HI	1,851	82.7	388	17.3	2,239	1,831	83.0	376	17.0	2,207
7271	MIAMI CORAL PARK SENIOR	2,795	83.6	550	16.4	3,345	2,652	81.0	624	19.0	3,276
7301	MIAMI EDISON SENIOR HI.	790	68.2	369	31.8	1,159	802	72.2	309	27.8	1,111
7341	MIAMI JACKSON SENIOR HI	1,625	82.4	348	17.6	1,973	1,576	83.7	307	16.3	1,883
7361	MIAMI KILLIAN SENIOR HI	2,299	93.8	151	6.2	2,450	2,175	92.9	165	7.1	2,340
7371	ROBERT MORGAN ED CENTER	2,359	100.0	0	0.0	2,359	2,304	100.0	0	0.0	2,304
7381	MIAMI NORLAND SENIOR HI	1,665	90.3	179	9.7	1,844	1,710	89.8	195	10.2	1,905
7391	MIAMI LAKES ED. CENTER	1,403	100.0	0	0.0	1,403	1,501	100.0	0	0.0	1,501
7411	MIAMI NORTHWESTERN SR.	1,599	85.8	264	14.2	1,863	1,641	87.1	242	12.9	1,883

Note. Schools highlighted had the greatest enrollment loss in their grade organization (top 25<sup>th</sup> percentile) during 2015.

(table continues)

Table 2, continued

Location	School	2014-15					2015-16				
		Traditional		Charter		Total	Traditional		Charter		Total
		n	%	n	%		n	%	n	%	
7431	MIAMI PALMETTO SENIOR	2,612	98.3	44	1.7	2,656	2,588	98.4	42	1.6	2,630
7461	MIAMI SENIOR HIGH SCH.	2,959	90.2	322	9.8	3,281	2,982	89.8	340	10.2	3,322
7511	MIAMI SPRINGS SENIOR HI	1,699	81.9	375	18.1	2,074	1,687	81.6	380	18.4	2,067
7531	MIAMI SUNSET SENIOR HI.	1,772	90.5	187	9.5	1,959	1,569	88.6	201	11.4	1,770
7541	NORTH MIAMI BEACH SR.	1,830	93.8	122	6.3	1,952	1,700	93.6	116	6.4	1,816
7551	SCHOOL FOR ADV. STUDY H	125	100.0	0	0.0	125	113	100.0	0	0.0	113
7571	INTRNL STUDIES PREP ACA	320	100.0	0	0.0	320	355	100.0	0	0.0	355
7581	IPREPARATORY ACADEMY	207	100.0	0	0.0	207	679	100.0	0	0.0	679
7591	NORTH MIAMI SENIOR HIGH	2,558	85.3	442	14.7	3,000	2,570	85.3	444	14.7	3,014
7601	WILLIAM TURNER TECH AR	1,572	100.0	0	0.0	1,572	1,470	100.0	0	0.0	1,470
7701	SOUTH DADE SENIOR HIGH	3,101	83.9	593	16.1	3,694	3,119	83.9	597	16.1	3,716
7721	SOUTH MIAMI SENIOR HIGH	2,299	91.2	222	8.8	2,521	2,218	90.8	226	9.2	2,444
7731	MIAMI SOUTHRIDGE SENIOR	2,071	77.9	588	22.1	2,659	1,992	76.5	611	23.5	2,603
7741	SOUTHWEST MIAMI SENIOR	3,092	94.4	182	5.6	3,274	2,969	94.0	190	6.0	3,159
7751	BARBARA GOLEMAN SENIOR	1,635	68.9	739	31.1	2,374	1,658	67.3	806	32.7	2,464
7781	FELIX VARELA SENIOR HI	3,019	95.6	138	4.4	3,157	2,880	95.4	140	4.6	3,020
7791	BOOKER T. WASHINGTON SR	982	64.3	545	35.7	1,527	955	59.1	662	40.9	1,617
7901	NEW WORLD SCHOOL ARTS	500	100.0	0	0.0	500	504	100.0	0	0.0	504
9994	M-DCPS SENIOR HIGH SCHOOLS	92,420	86.4	14,559	13.6	106,979	92,162	85.7	15,421	14.3	107,583

Note. The "Total" counts shown in the eighth and thirteenth columns of the table are obtained by adding the actual student population of the school (shown in the fourth and ninth columns of the table) to the estimated number of students lost to the charter schools (shown in the fifth and tenth columns of the table), in order to estimate the total number of students in the attendance zone of the school at the time of the October student membership counts. Highlighted schools are those that had the greatest enrollment loss (top 25th percentile) in their grade organization during 2015. Only traditional public schools, with assigned residence students, and without a school wide magnet program are included. Traditional school counts are based on actual October full time equivalent student membership. Charter counts are projected based on residence school data provided by the department of transportation.